

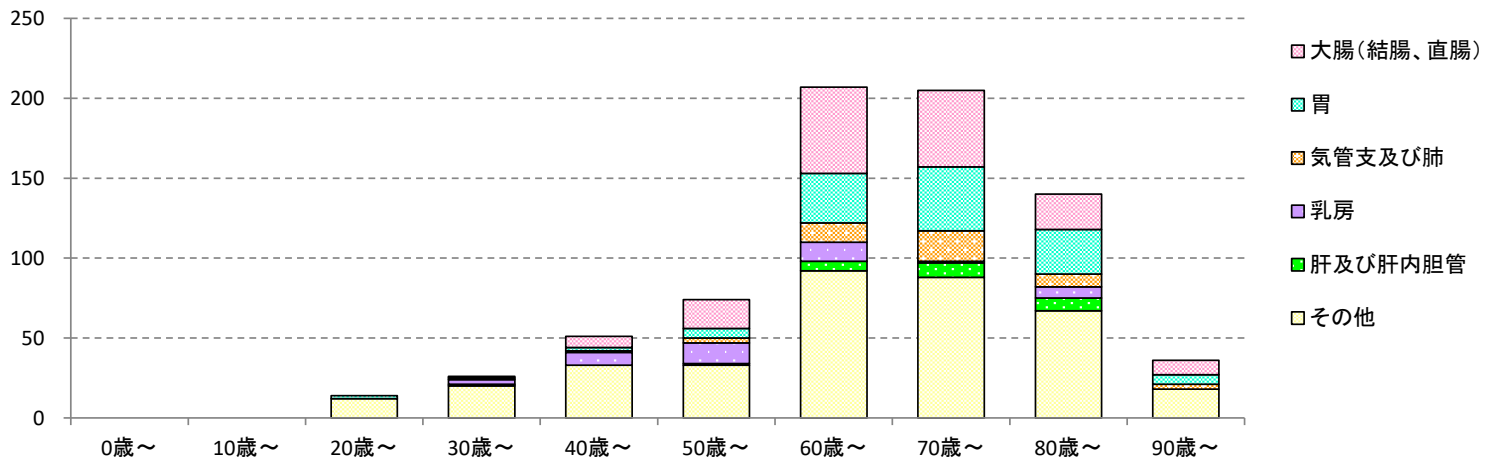
2016年診断例 年齢区分別

3. 部位別・年齢階層別登録件数(合計値2桁以上)

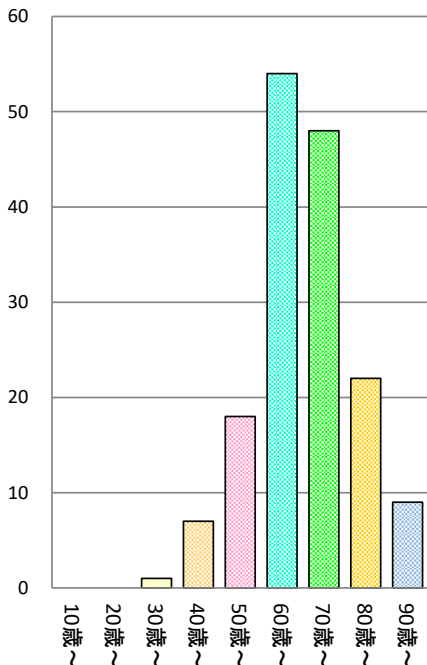
全体

ICD-O-3	局在名称	総計	0～9歳	10～19歳	20～29歳	30～39歳	40～49歳	50～59歳	60～69歳	70～79歳	80～89歳	90歳～
C18-20	大腸(結腸、直腸)	159	0	0	0	1	7	18	54	48	22	9
C16	胃	116	0	0	2	1	2	6	31	40	28	6
C61	前立腺	77	0	0	0	0	0	3	27	27	20	0
C34	気管支及び肺	46	0	0	0	0	1	3	12	19	8	3
C53	子宮頸	45	0	0	6	14	15	3	5	1	1	0
C50	乳房	44	0	0	0	3	8	13	12	1	7	0
C25	膵	27	0	0	0	0	1	1	5	9	10	1
C15	食道	26	0	0	0	0	0	3	12	7	4	0
C22	肝及び肝内胆管	25	0	0	0	1	0	1	6	9	8	0
C44	皮膚	22	0	0	0	0	2	1	1	10	3	5
C67	膀胱	22	0	0	0	0	1	1	6	9	3	2
C73	甲状腺	16	0	0	0	0	1	3	7	3	2	0
C54	子宮体	13	0	0	1	0	2	3	6	0	1	0
C64	腎	12	0	0	0	0	1	5	1	2	1	2
C00-08	口唇および口腔、舌根部、大唾液腺	11	0	0	0	1	3	0	1	1	4	1

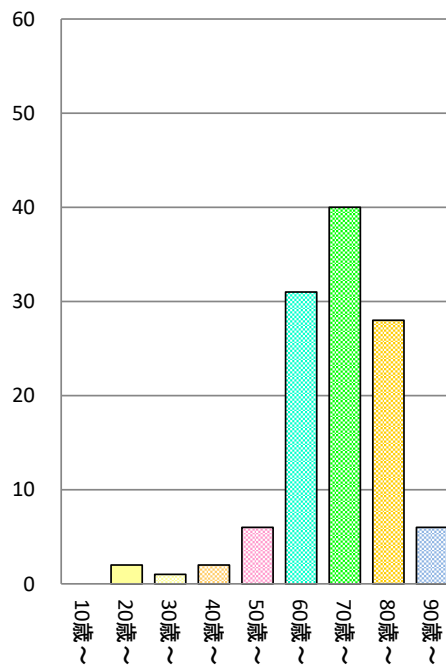
主要5部位とその他部位の件数



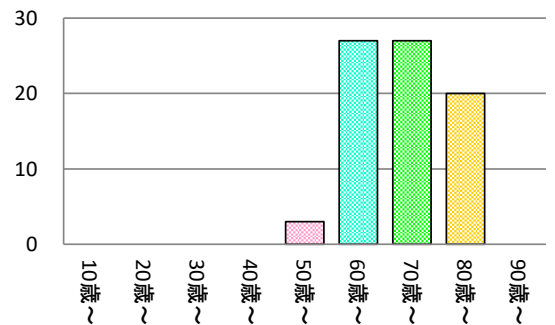
大腸(結腸、直腸)



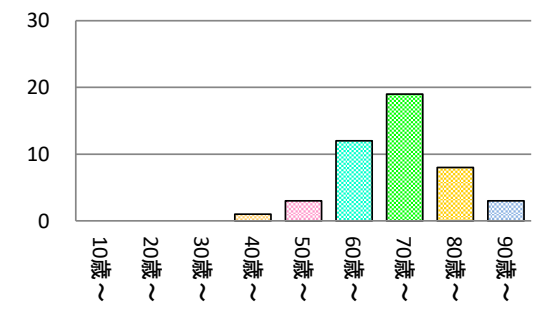
胃(全体)



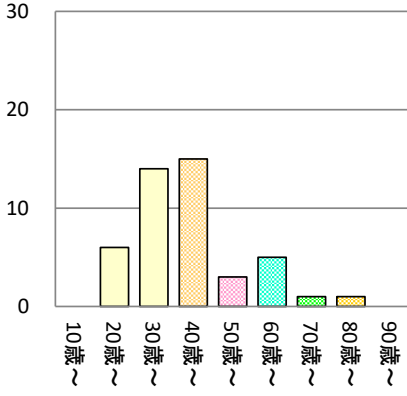
前立腺



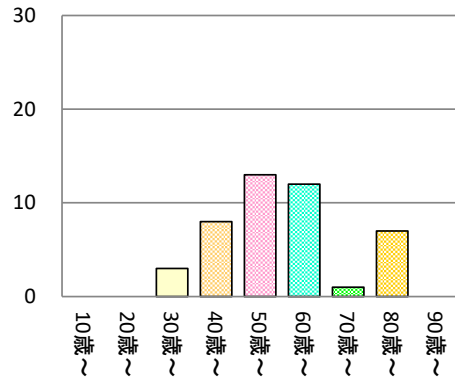
気管支及び肺(全体)



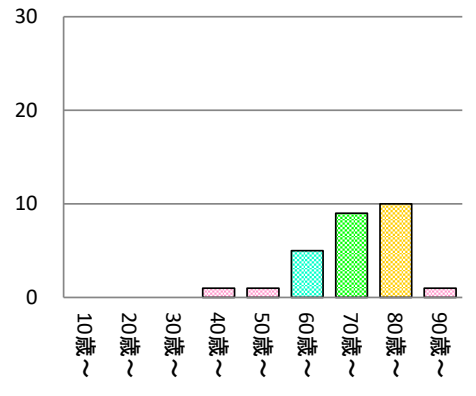
子宮頸



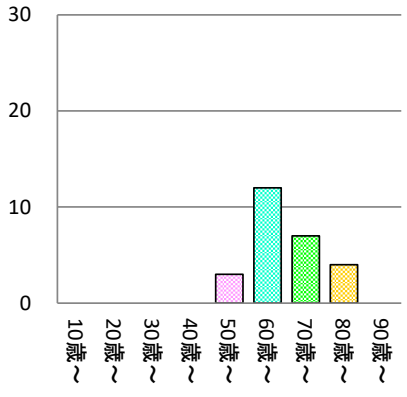
乳房



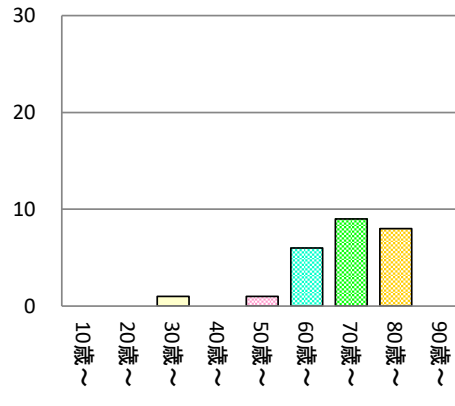
膵



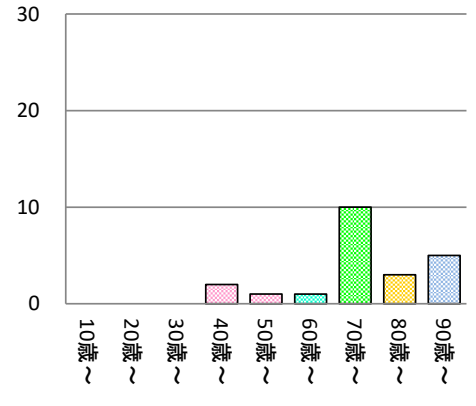
食道



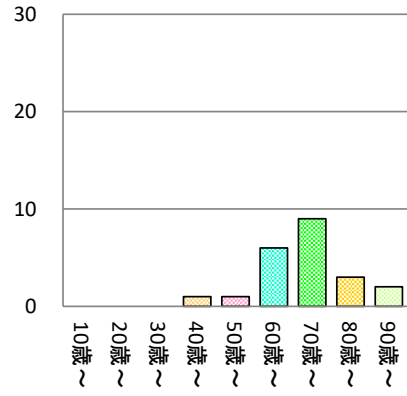
肝及び肝内胆管



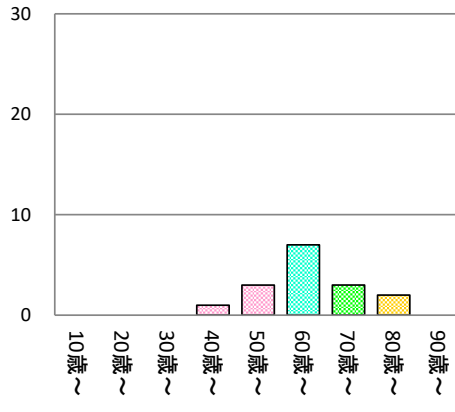
皮膚



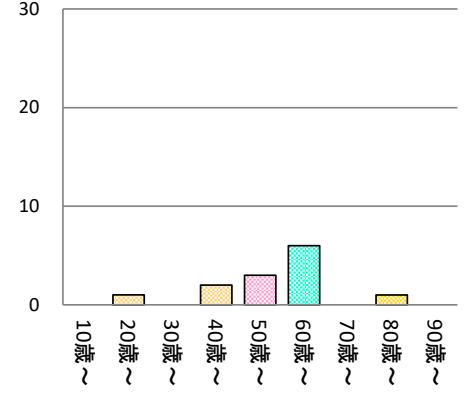
膀胱



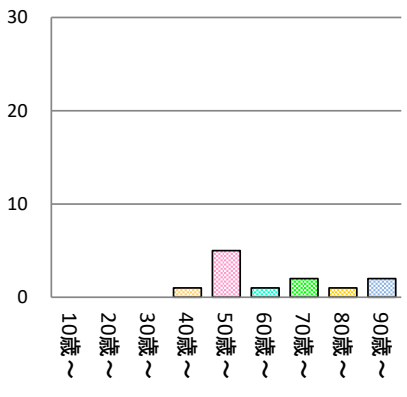
甲状腺



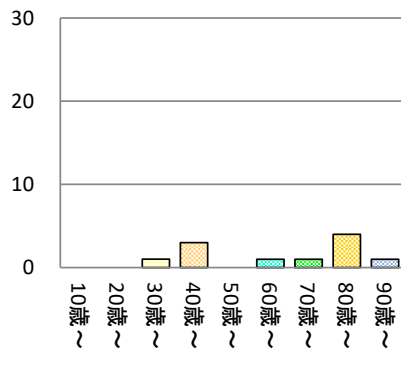
子宮体



肺

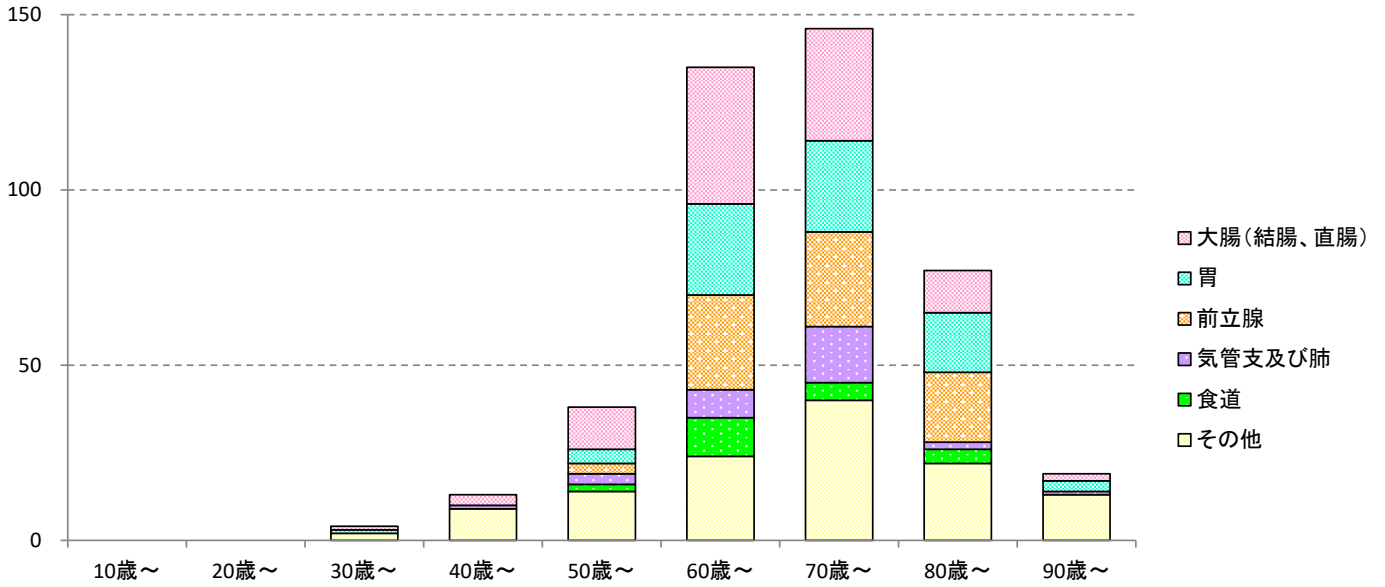


口唇および口腔、舌根部、大唾液腺

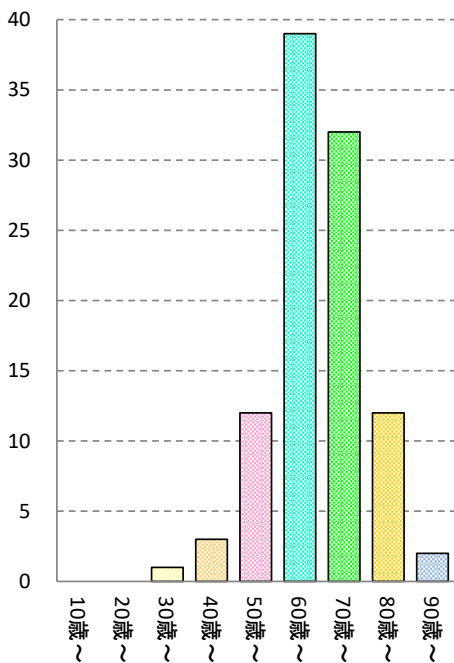


男性

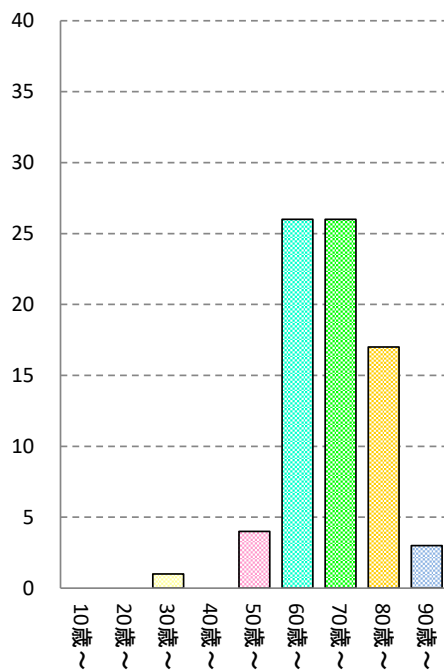
ICD-O-3	局在名称	総計	0～9歳	10～19歳	20～29歳	30～39歳	40～49歳	50～59歳	60～69歳	70～79歳	80～89歳	90歳～
C18-20	大腸（結腸、直腸）	101	0	0	0	1	3	12	39	32	12	2
C16	胃	77	0	0	0	1	0	4	26	26	17	3
C61	前立腺	77	0	0	0	0	0	3	27	27	20	0
C34	気管支及び肺	31	0	0	0	0	1	3	8	16	2	1
C15	食道	22	0	0	0	0	0	2	11	5	4	0
C25	膵	16	0	0	0	0	0	0	4	7	4	1
C67	膀胱	16	0	0	0	0	1	1	4	7	1	2
C22	肝及び肝内胆管	15	0	0	0	0	0	1	3	6	5	0
C44	皮膚	13	0	0	0	0	2	1	1	3	2	4



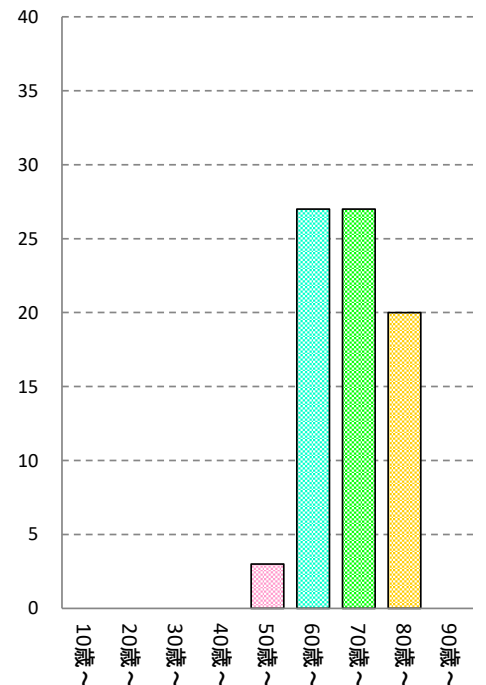
大腸(結腸、直腸)



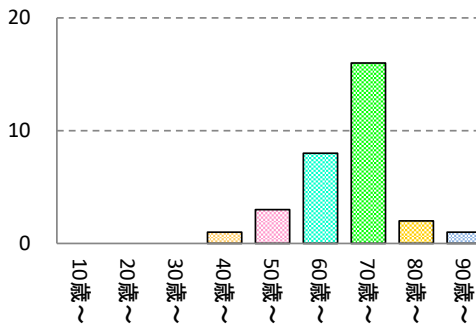
胃



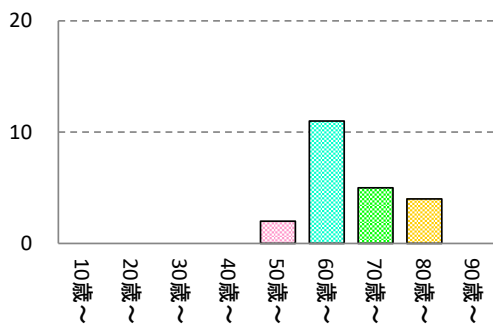
前立腺



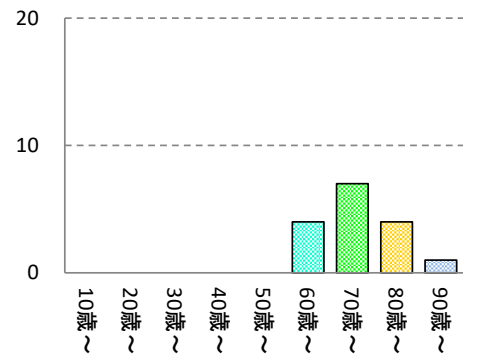
気管支及び肺



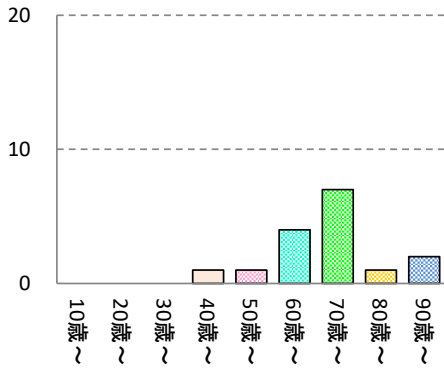
食道



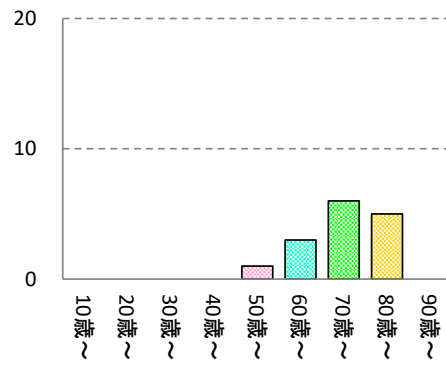
脾



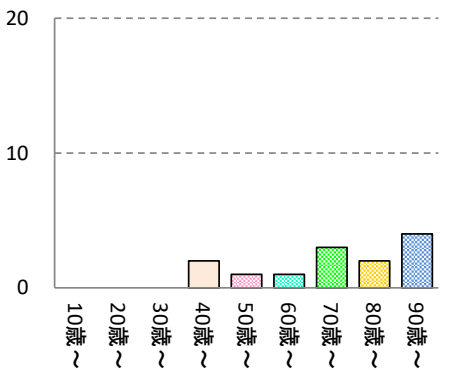
膀胱



肝及び肝内胆管

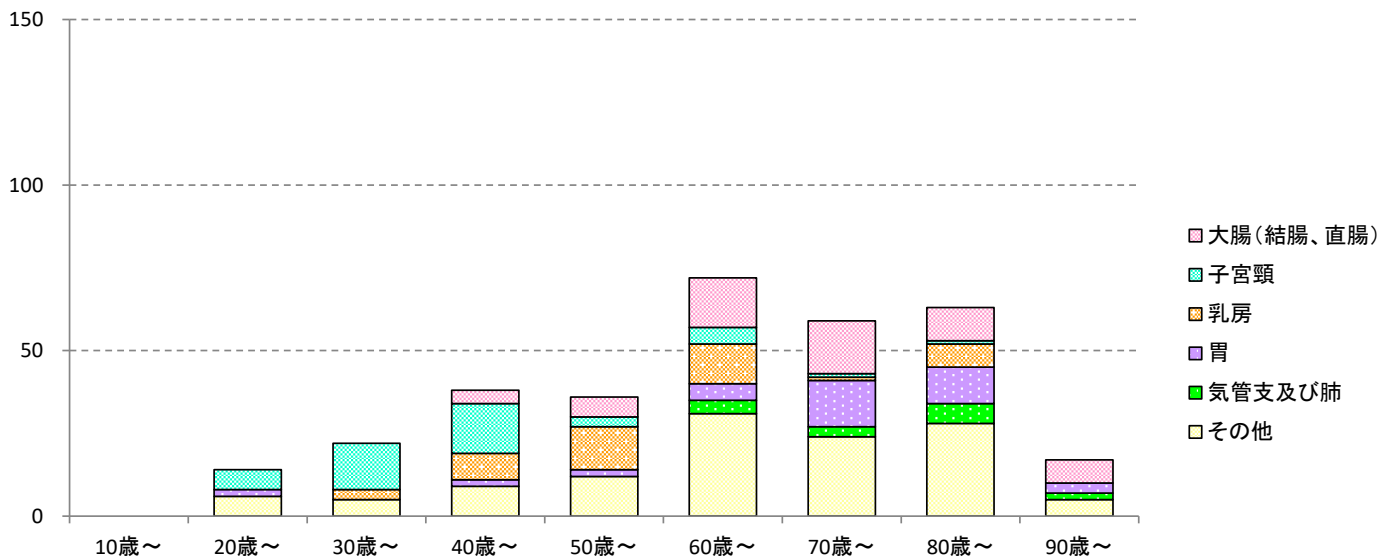


皮膚

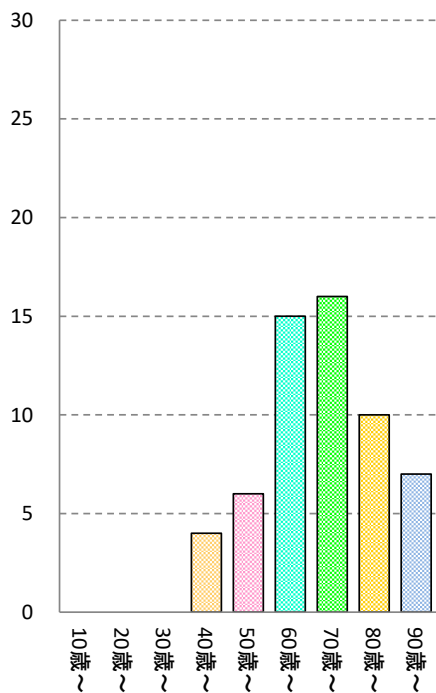


女性

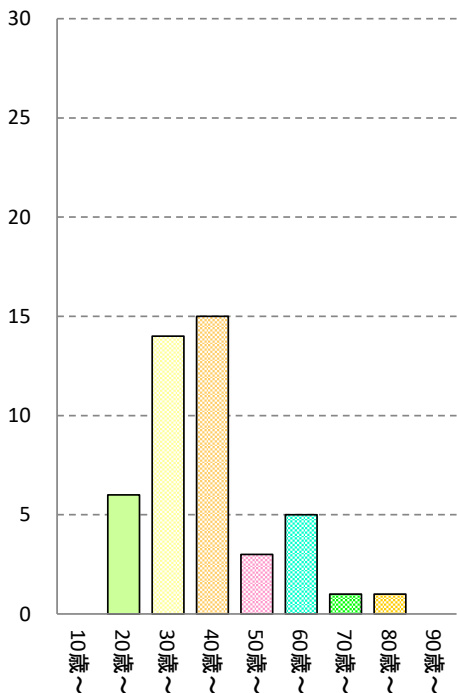
ICD-O-3	局在名称	総計	0～9歳	10～19歳	20～29歳	30～39歳	40～49歳	50～59歳	60～69歳	70～79歳	80～89歳	90歳～
C18-20	大腸（結腸、直腸）	58	0	0	0	0	4	6	15	16	10	7
C53	子宮頸	45	0	0	6	14	15	3	5	1	1	0
C50	乳房	44	0	0	0	3	8	13	12	1	7	0
C16	胃	39	0	0	2	0	2	2	5	14	11	3
C34	気管支及び肺	15	0	0	0	0	0	0	4	3	6	2
C54	子宮体	13	0	0	1	0	2	3	6	0	1	0
C73	甲状腺	13	0	0	0	0	1	2	7	1	2	0
C25	痔	11	0	0	0	0	1	1	1	2	6	0
C22	肝及び肝内胆管	10	0	0	0	1	0	0	3	3	3	0



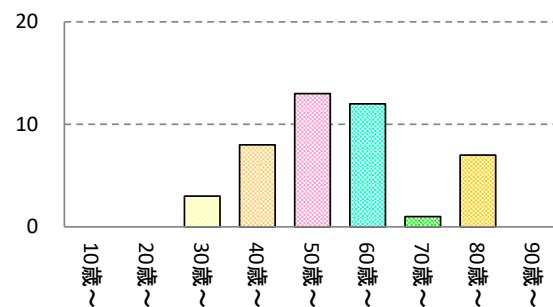
乳房



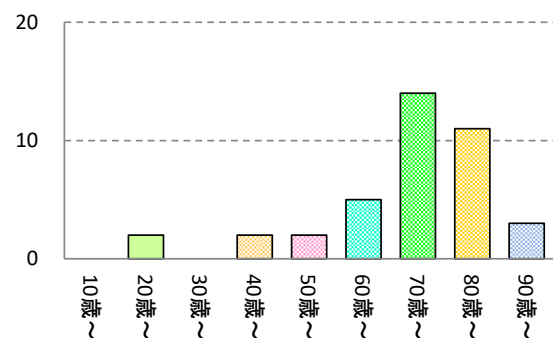
子宮頸



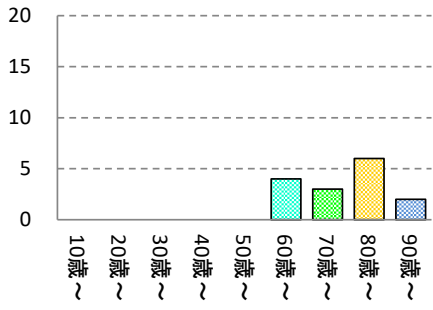
子宮頸



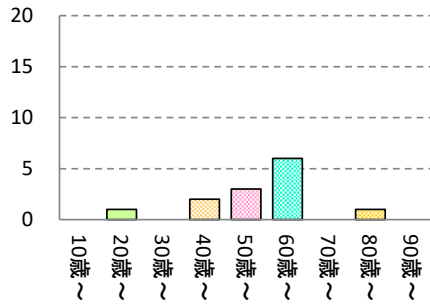
胃



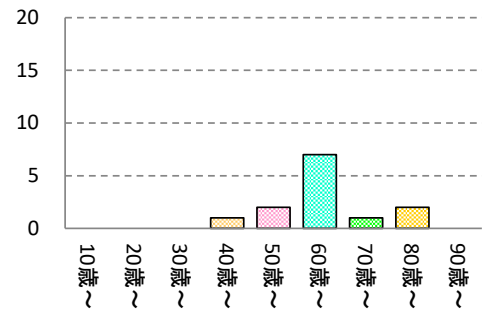
気管支及び肺



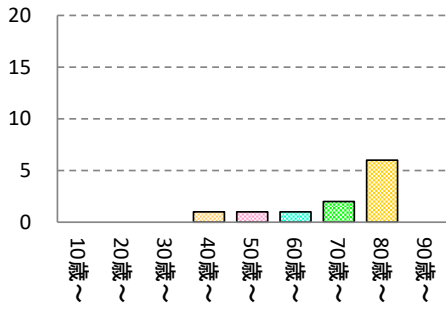
子宮体



甲状腺



癌



肝及び肝内胆管

