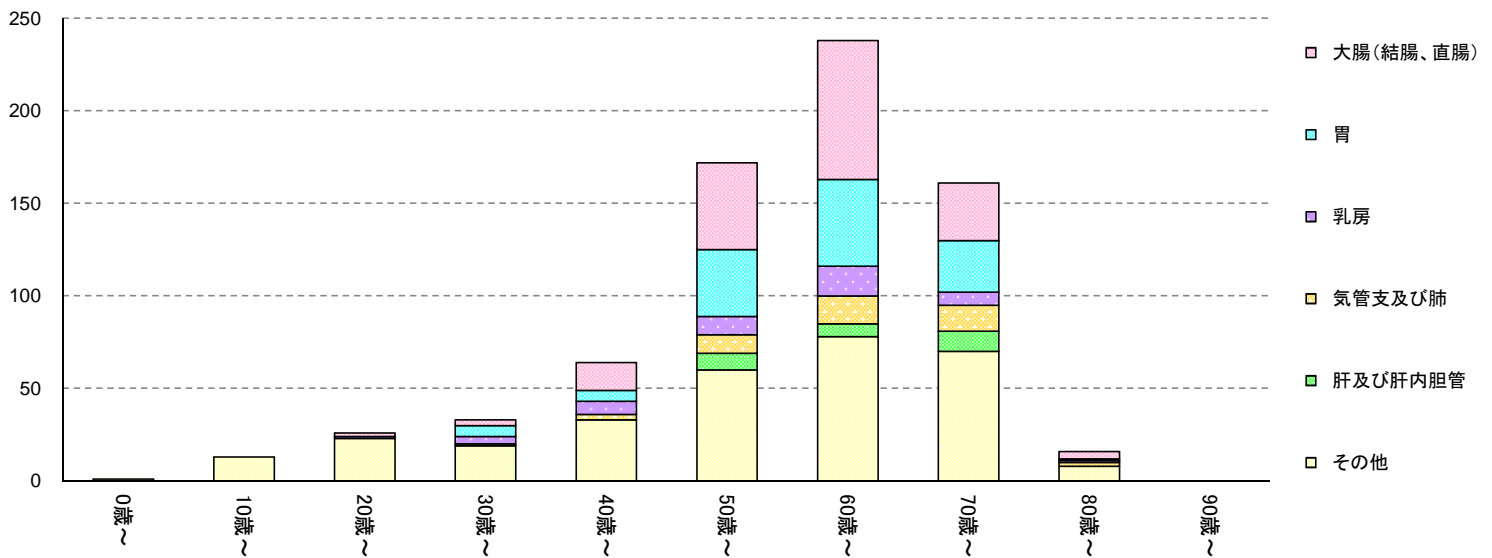


3. 部位別・年齢階層別登録件数(合計値2桁以上)

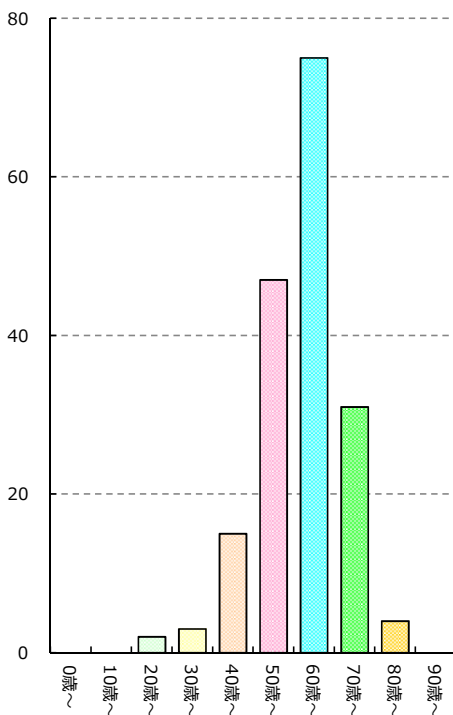
全体

ICDO3	局在名称	合計	0～9歳	10～19歳	20～29歳	30～39歳	40～49歳	50～59歳	60～69歳	70～79歳	80～89歳	90歳～
C18-20	大腸(結腸、直腸)	177	0	0	2	3	15	47	75	31	4	0
C16	胃	124	0	0	0	6	6	36	47	28	1	0
C61	前立腺	58	0	0	0	1	3	18	22	13	1	0
C50	乳房	46	0	0	1	4	7	10	16	7	1	0
C34	気管支及び肺	44	0	0	0	0	3	10	15	14	2	0
C53	子宮頸部	39	0	9	17	8	1	3	0	1	0	0
C15	食道	29	0	0	0	0	4	9	11	5	0	0
C22	肝及び肝内胆管	28	0	0	0	1	0	9	7	11	0	0
C67	膀胱	26	0	0	0	0	4	5	7	9	1	0
C25	脾	24	0	0	0	0	3	3	9	9	0	0
C73	甲状腺	14	0	1	2	3	0	4	3	1	0	0
C54	子宮体部	10	0	0	0	2	2	2	3	1	0	0

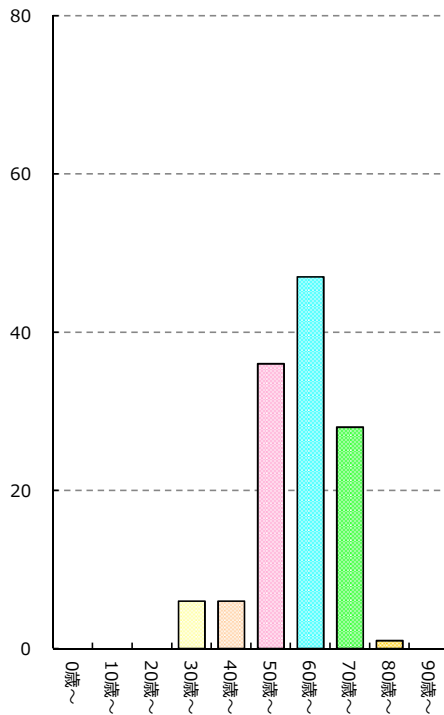
主要5部位とその他の件数



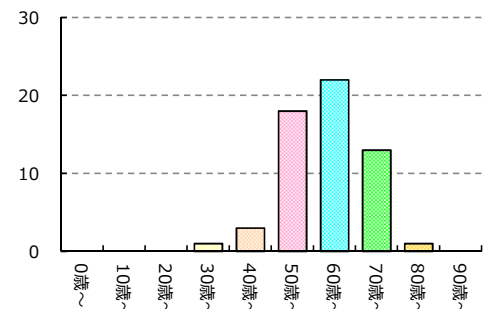
大腸(結腸、直腸)



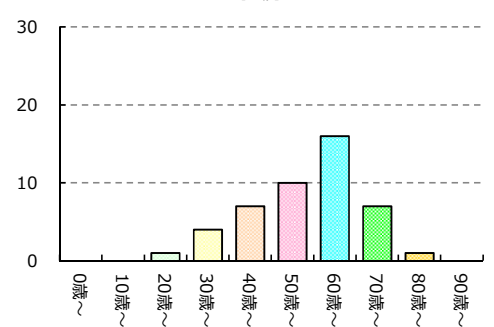
胃



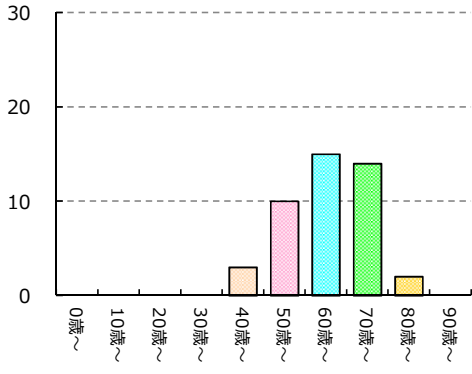
前立腺



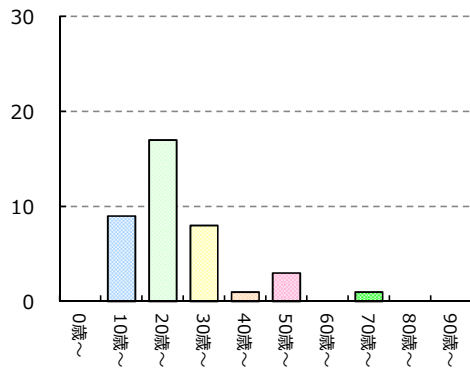
乳房



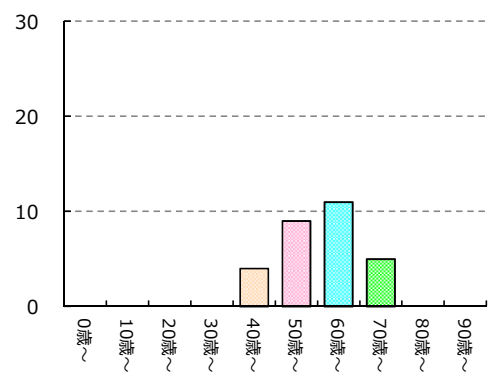
気管支及び肺



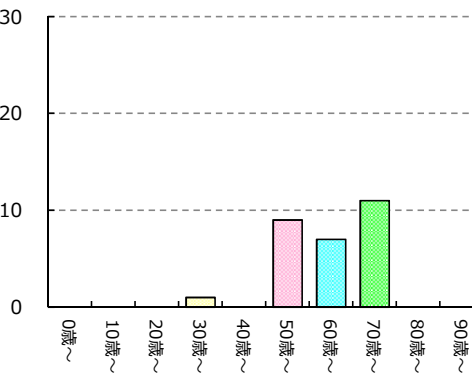
子宮頸部



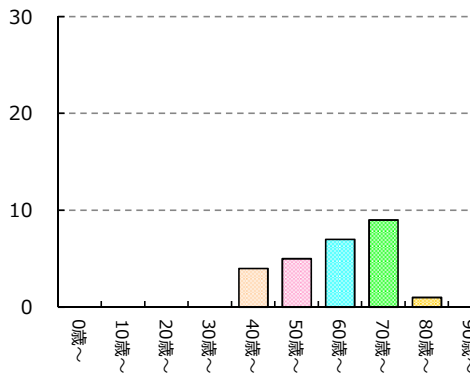
食道



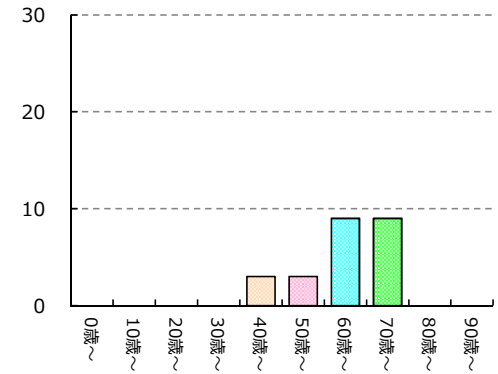
肝及び肝内胆管



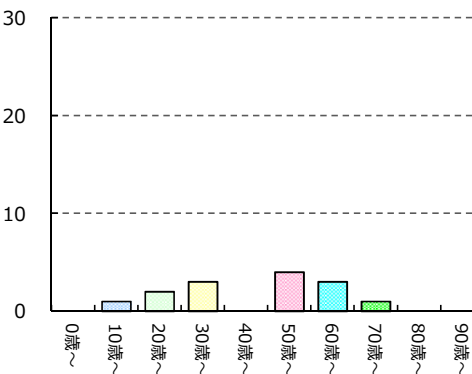
膀胱



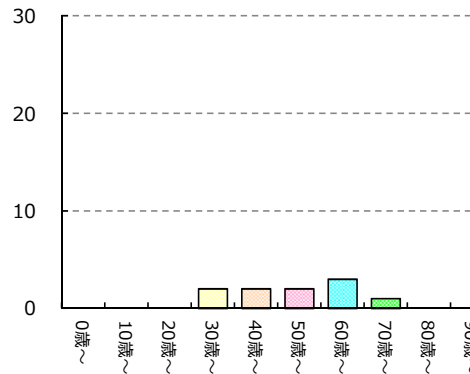
脾



甲状腺

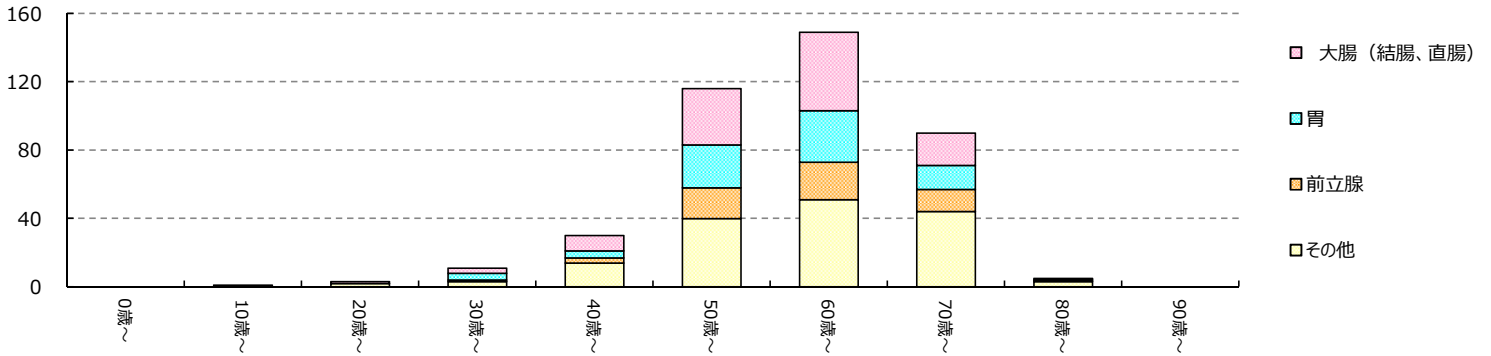


子宮体部

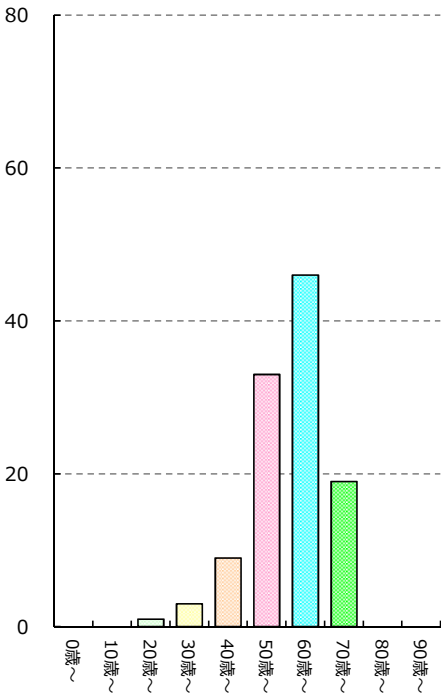


男性

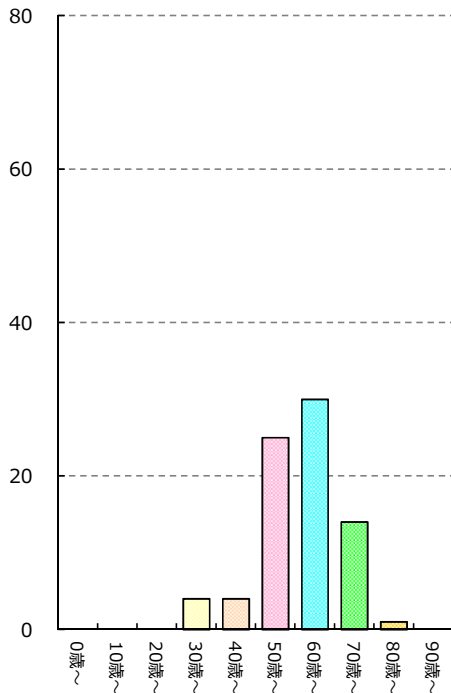
ICD-O-3	局在名称	合計	0～9歳	10～19歳	20～29歳	30～39歳	40～49歳	50～59歳	60～69歳	70～79歳	80～89歳	90歳～
C18-20	大腸(結腸、直腸)	111	0	0	1	3	9	33	46	19	0	0
C16	胃	78	0	0	0	4	4	25	30	14	1	0
C61	前立腺	58	0	0	0	1	3	18	22	13	1	0
C34	気管支及び肺	28	0	0	0	0	1	8	10	8	1	0
C15	食道	23	0	0	0	0	3	7	9	4	0	0
C67	膀胱	20	0	0	0	0	3	5	4	7	1	0
C22	肝及び肝内胆管	18	0	0	0	1	0	8	7	2	0	0
C25	膵	14	0	0	0	0	0	1	8	5	0	0



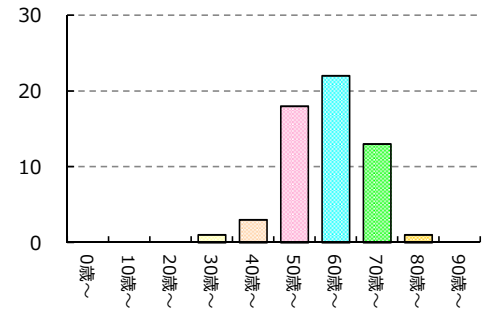
大腸(結腸、直腸)



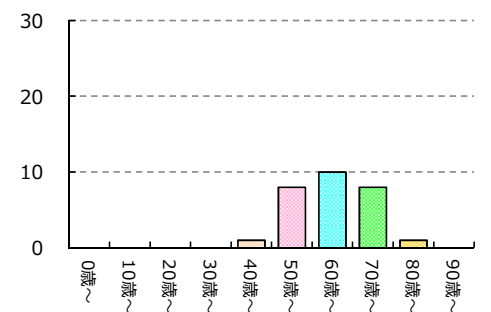
胃



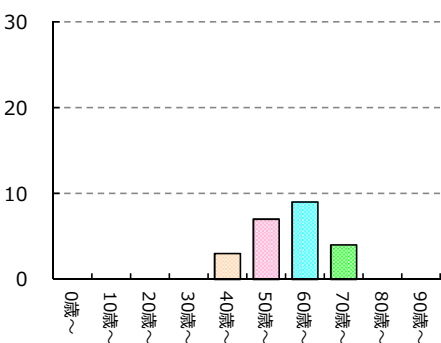
前立腺



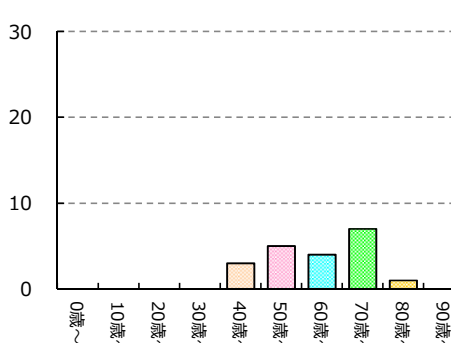
気管支及び肺



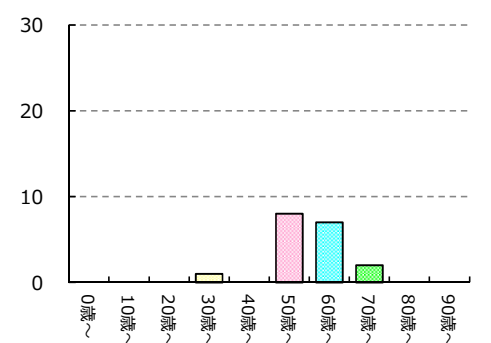
食道



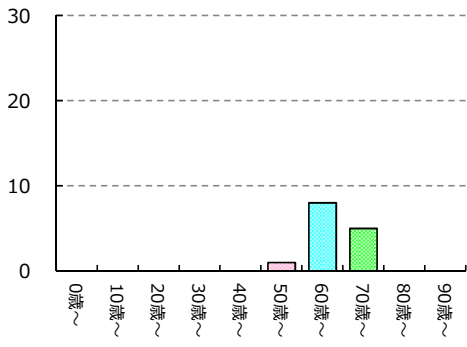
膀胱



肝及び肝内胆管

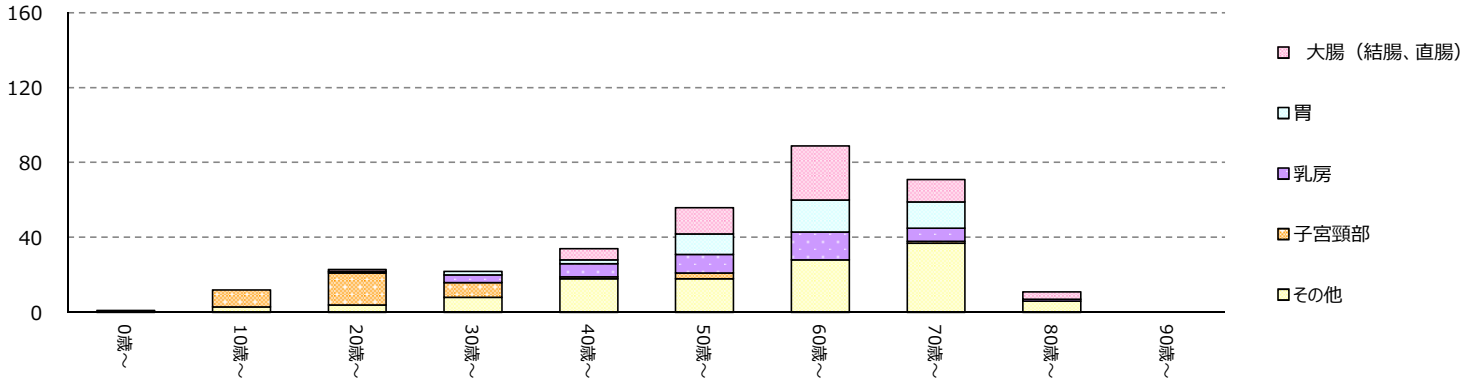


# 痔

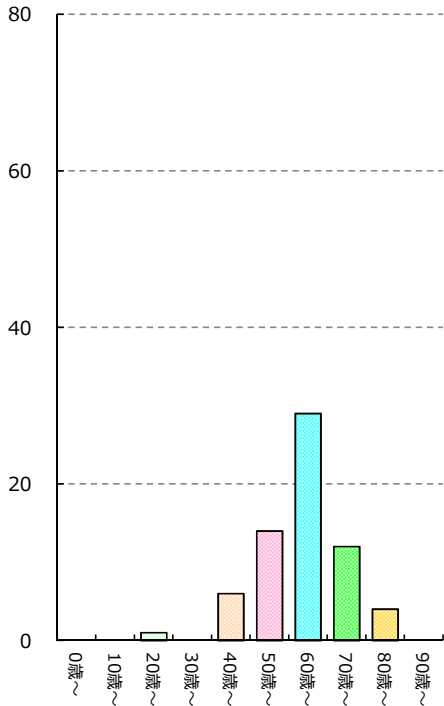


女性

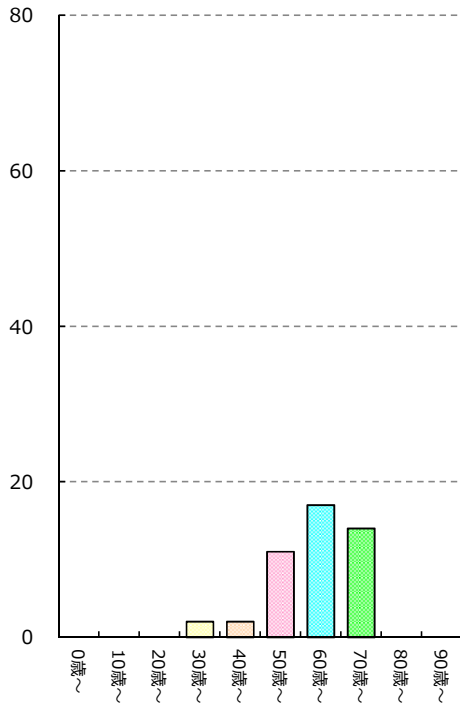
ICD-O-3	局在名称	合計	0～9歳	10～19歳	20～29歳	30～39歳	40～49歳	50～59歳	60～69歳	70～79歳	80～89歳	90歳～
C18-20	大腸(結腸、直腸)	66	0	0	1	0	6	14	29	12	4	0
C16	胃	46	0	0	0	2	2	11	17	14	0	0
C50	乳房	45	0	0	1	4	7	10	15	7	1	0
C53	子宮頸部	39	0	9	17	8	1	3	0	1	0	0
C34	気管支及び肺	16	0	0	0	0	2	2	5	6	1	0
C73	甲状腺	11	0	1	1	2	0	3	3	1	0	0
C22	肝及び肝内胆管	10	0	0	0	0	0	1	0	9	0	0
C25	脾	10	0	0	0	0	3	2	1	4	0	0
C54	子宮体部	10	0	0	0	0	2	2	2	3	0	0



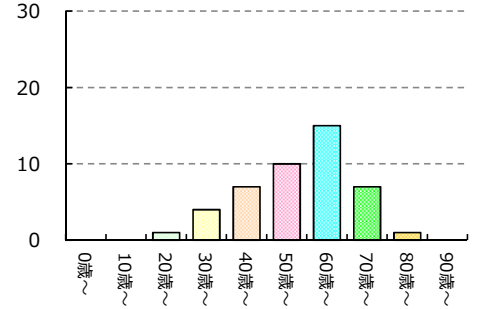
大腸(結腸、直腸)



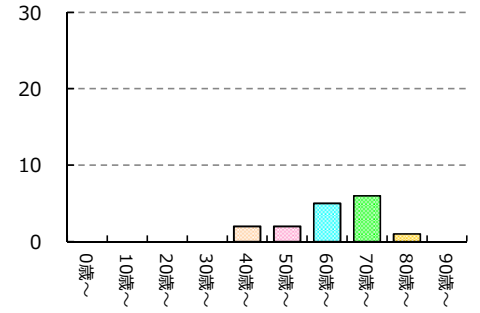
胃



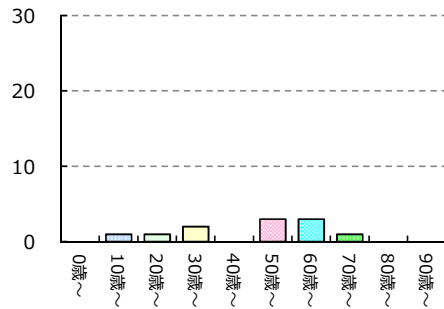
乳房



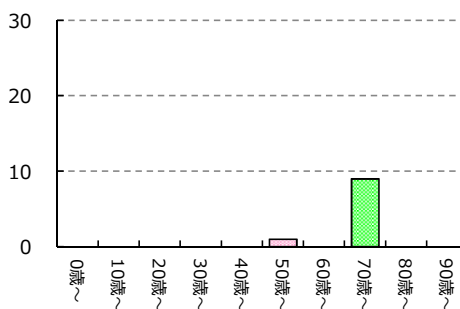
気管支及び肺



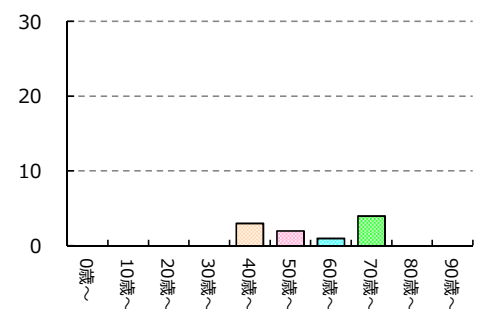
甲状腺



肝及び肝内胆管



脾



### 子宮体部

