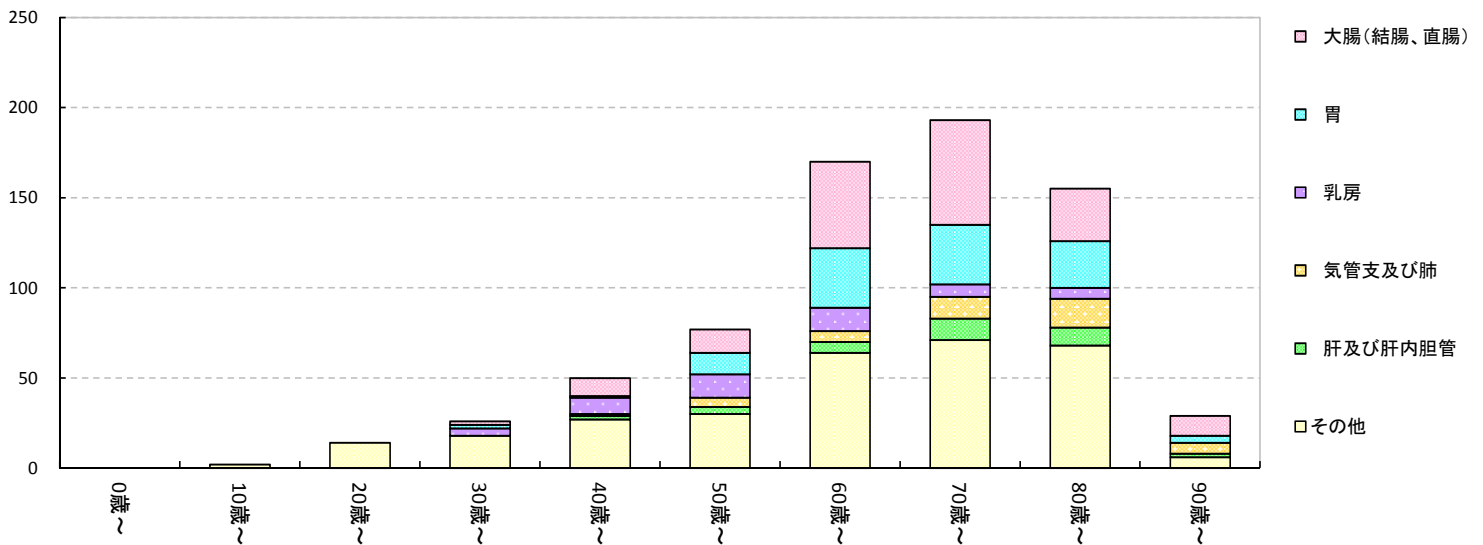


3. 部位別・年齢階層別登録件数(合計値2桁以上)

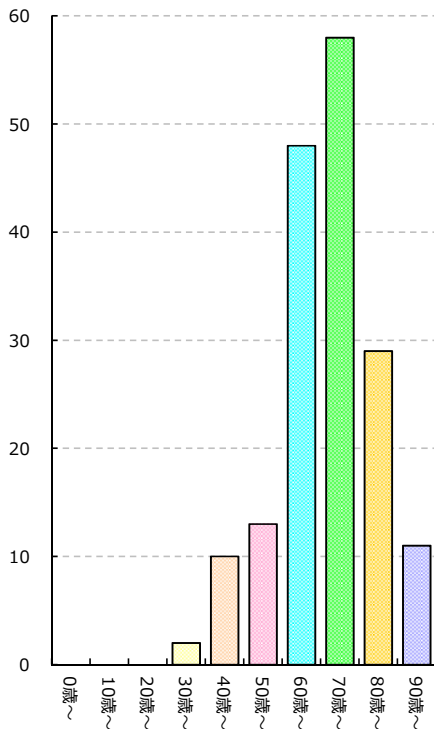
全体

ICDO3	局在名称	合計	0～9歳	10～19歳	20～29歳	30～39歳	40～49歳	50～59歳	60～69歳	70～79歳	80～89歳	90歳～
C18-20	大腸(結腸、直腸)	171	0	0	0	2	10	13	48	58	29	11
C16	胃	111	0	0	0	2	1	12	33	33	26	4
C50	乳房	52	0	0	0	4	9	13	13	7	6	0
C53	子宮頸部	50	0	0	10	15	18	4	0	2	1	0
C34	気管支及び肺	46	0	0	0	0	1	5	6	12	16	6
C61	前立腺	41	0	0	0	0	0	1	12	20	8	0
C22	肝及び肝内胆管	36	0	0	0	0	2	4	6	12	10	2
C67	膀胱	25	0	0	0	0	0	2	7	9	7	0
C25	脾	22	0	0	0	0	0	1	5	7	9	0
C73	甲状腺	21	0	1	1	0	5	4	7	1	2	0
C15	食道	17	0	0	0	0	0	3	8	4	2	0
C00-08	口唇および口腔、舌根部、大唾液腺	10	0	0	0	0	0	2	3	2	2	1
C71	脳	10	0	0	2	0	1	1	2	2	2	0

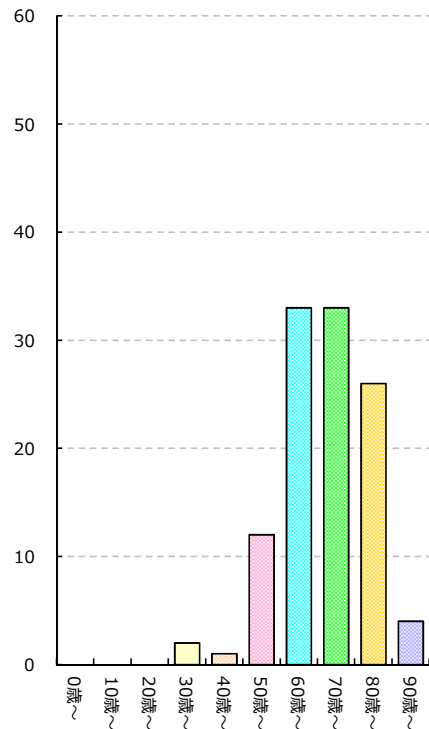
主要5部位とその他部位の件数



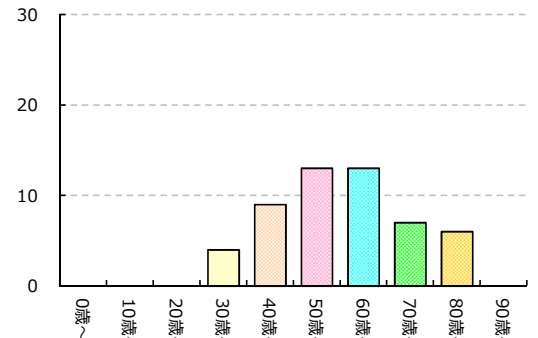
大腸(結腸、直腸)



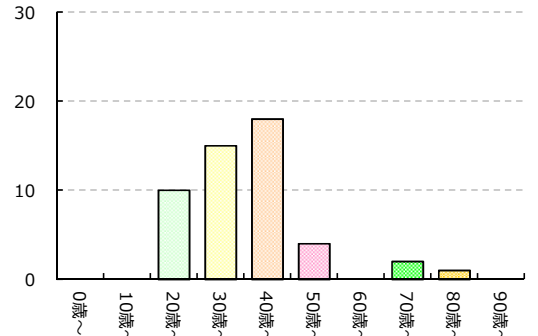
胃



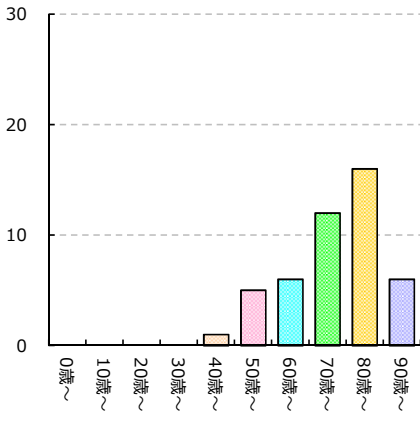
乳房



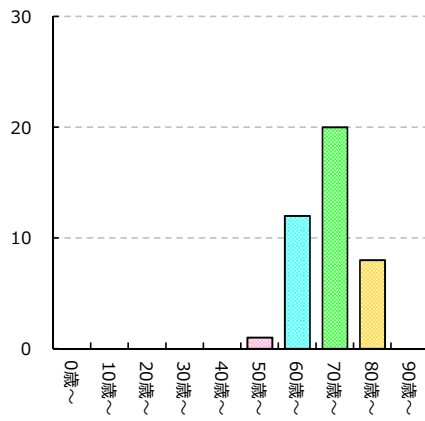
子宮頸部



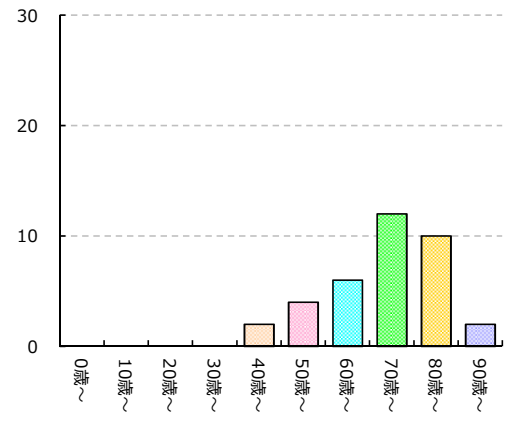
気管支及び肺



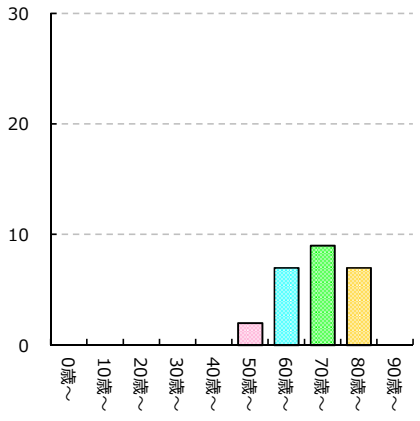
前立腺



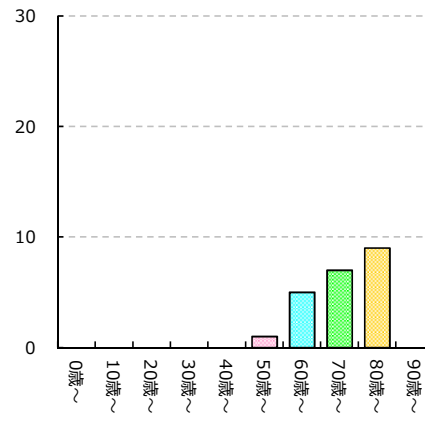
肝及び肝内胆管



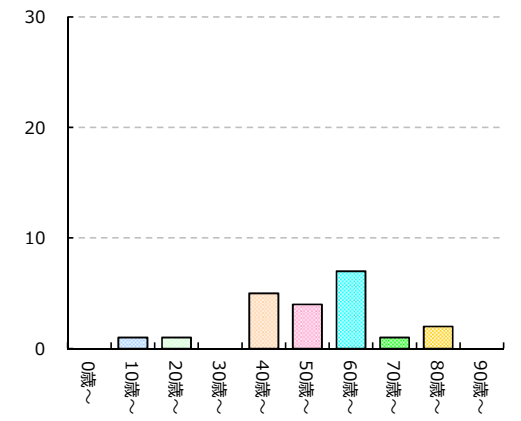
膀胱



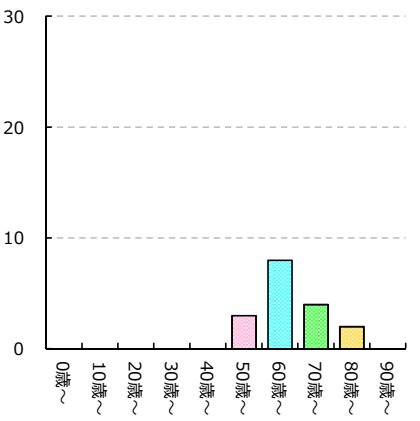
脾



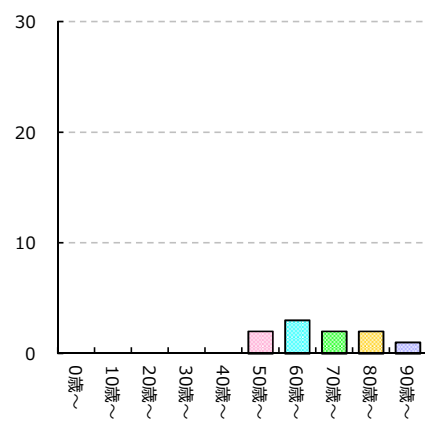
甲状腺



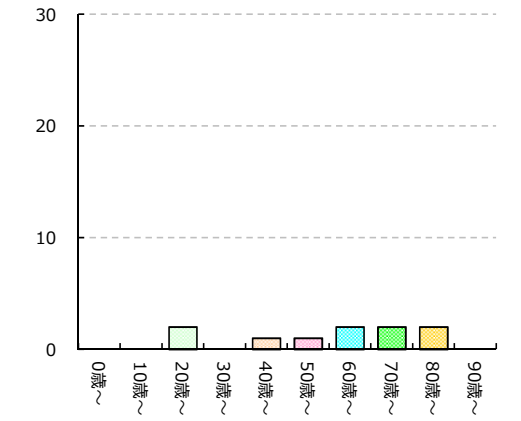
食道



口唇および口腔、舌根部、大唾液腺

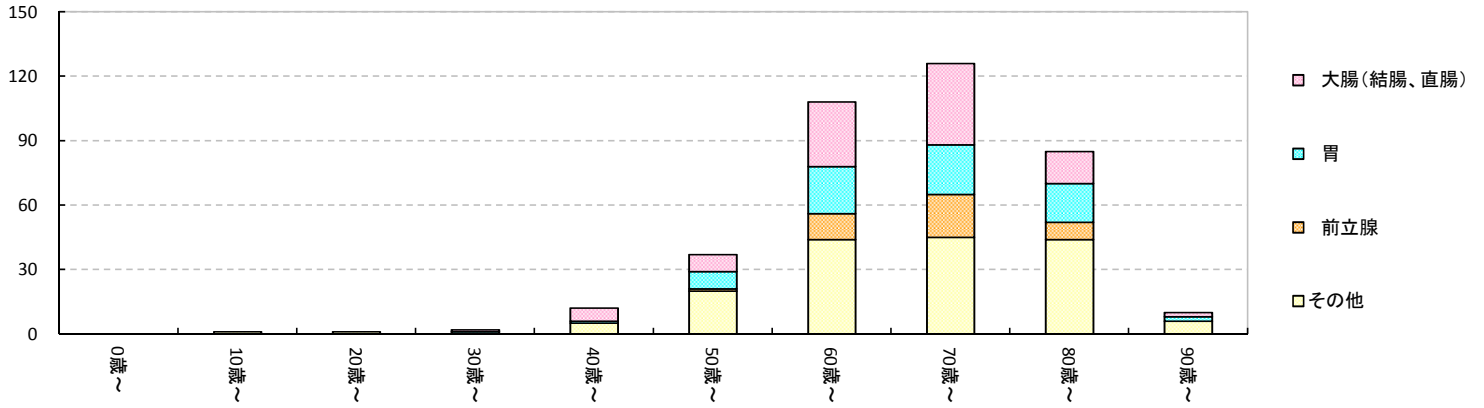


脳

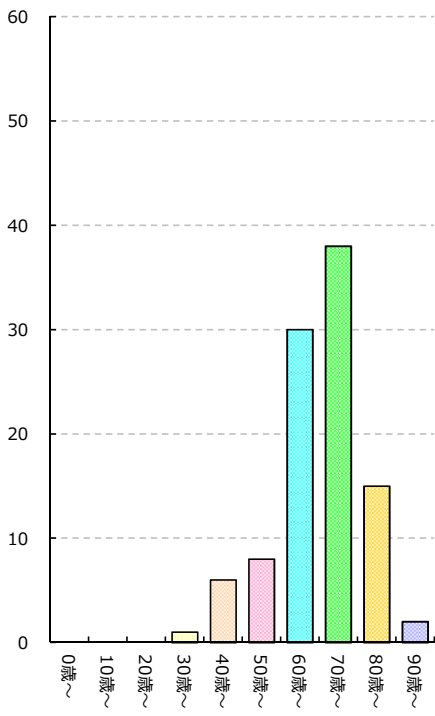


男性

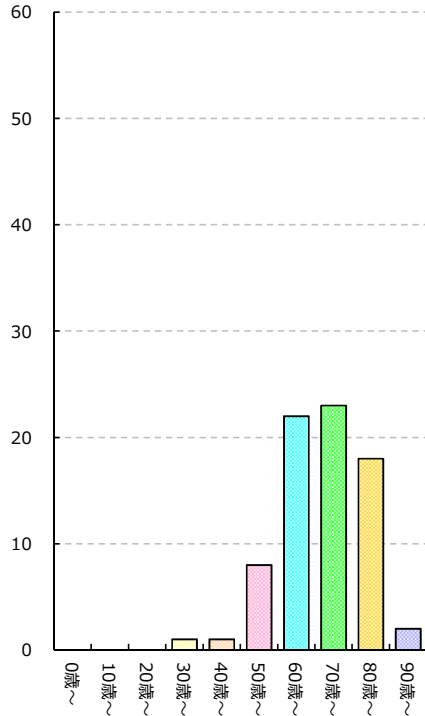
ICD-O-3	局在名称	合計	0～9歳	10～19歳	20～29歳	30～39歳	40～49歳	50～59歳	60～69歳	70～79歳	80～89歳	90歳～
C18-20	大腸(結腸、直腸)	100	0	0	0	1	6	8	30	38	15	2
C16	胃	75	0	0	0	1	1	8	22	23	18	2
C61	前立腺	41	0	0	0	0	0	1	12	20	8	0
C34	気管支及び肺	34	0	0	0	0	1	5	5	10	11	2
C22	肝及び肝内胆管	23	0	0	0	0	1	3	6	8	4	1
C67	膀胱	21	0	0	0	0	0	2	5	8	6	0
C15	食道	15	0	0	0	0	0	3	7	3	2	0
C25	脾	11	0	0	0	0	0	1	4	3	3	0



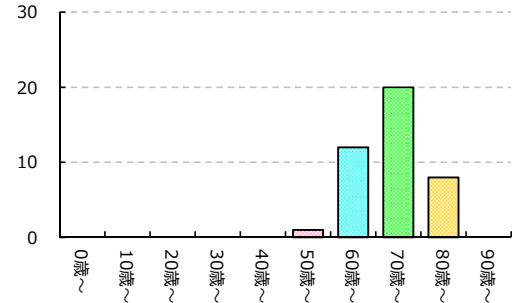
大腸(結腸、直腸)



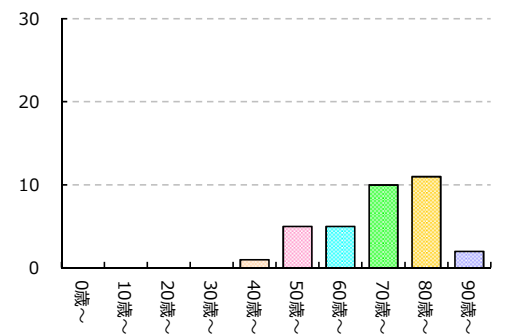
胃



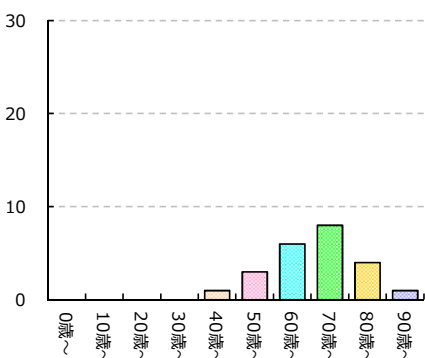
前立腺



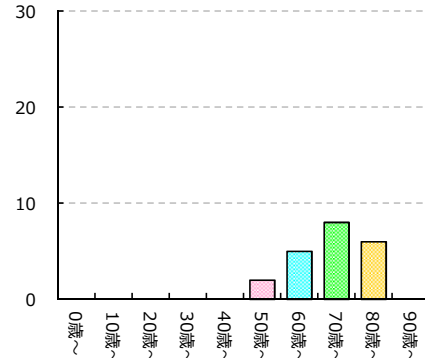
気管支及び肺



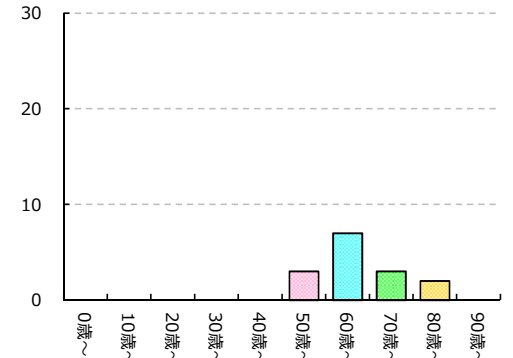
肝及び肝内胆管



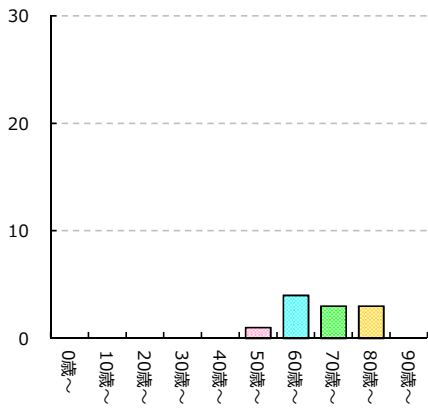
膀胱



食道

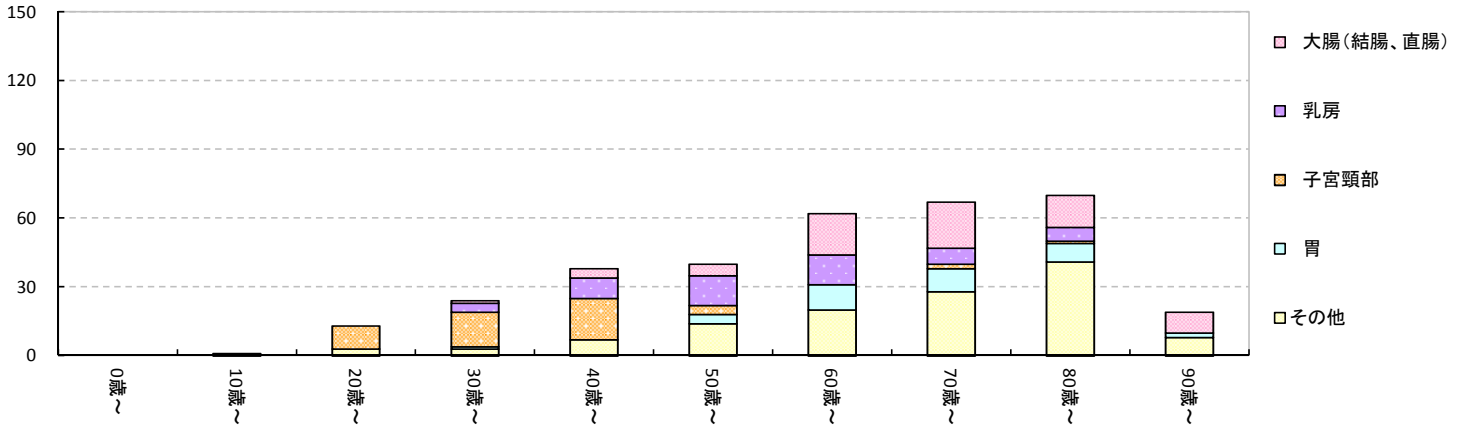


障



女性

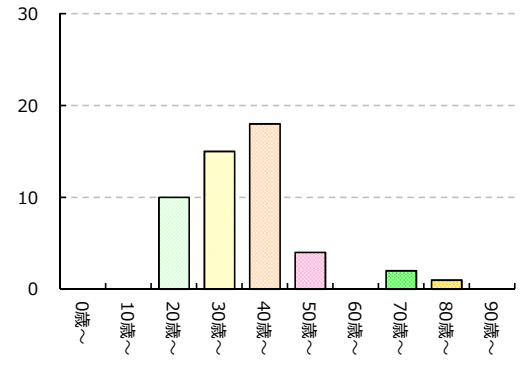
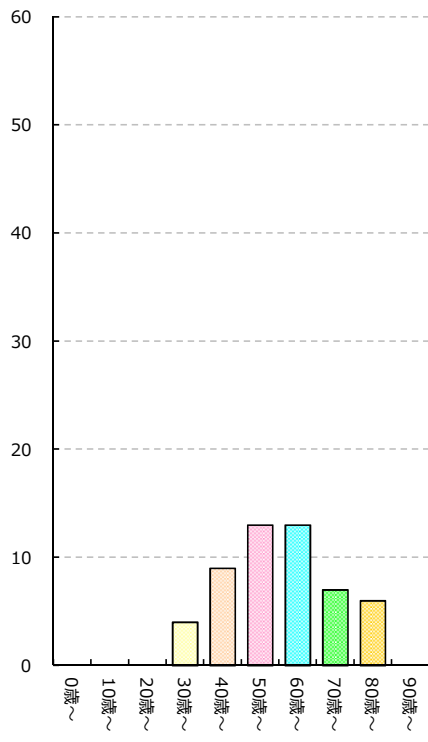
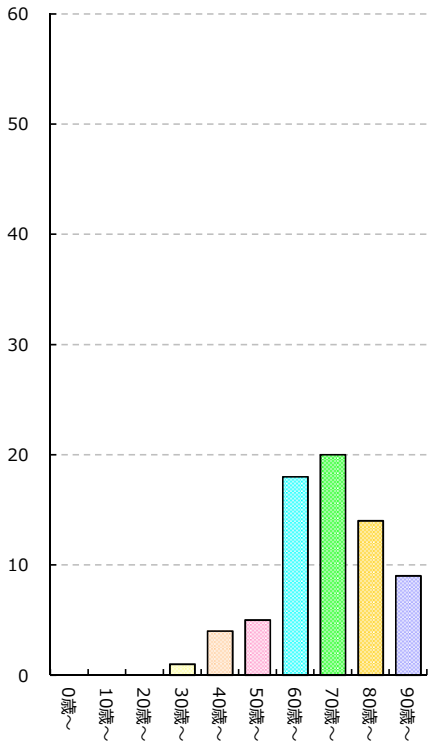
ICD-O-3	局在名称	合計	0～9歳	10～19歳	20～29歳	30～39歳	40～49歳	50～59歳	60～69歳	70～79歳	80～89歳	90歳～
C18-20	大腸(結腸、直腸)	71	0	0	0	1	4	5	18	20	14	9
C50	乳房	52	0	0	0	4	9	13	13	7	6	0
C53	子宮頸部	50	0	0	10	15	18	4	0	2	1	0
C16	胃	36	0	0	0	1	0	4	11	10	8	2
C73	甲状腺	14	0	1	1	0	3	3	3	1	2	0
C22	肝及び肝内胆管	13	0	0	0	0	1	1	0	4	6	1
C34	気管支及び肺	12	0	0	0	0	0	0	1	2	5	4
C25	膵	11	0	0	0	0	0	0	1	4	6	0



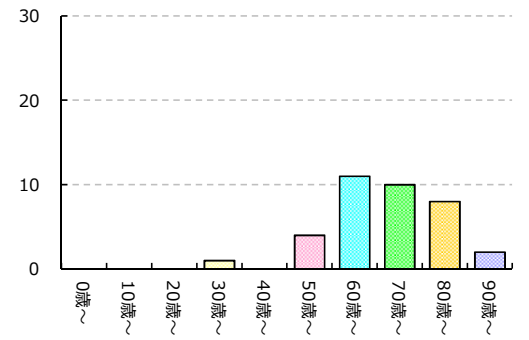
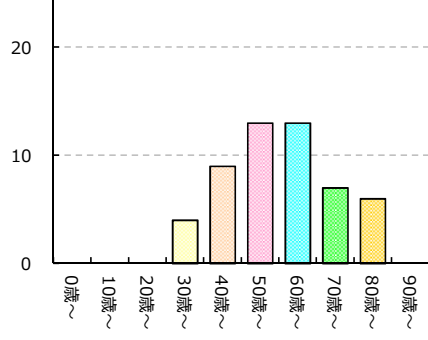
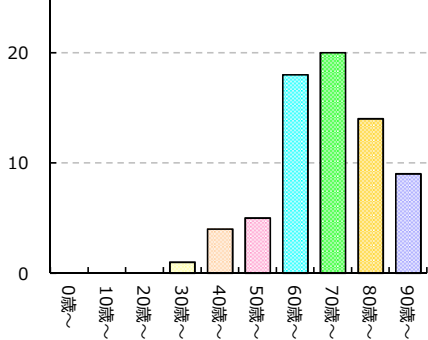
大腸(結腸、直腸)

乳房

子宮頸部



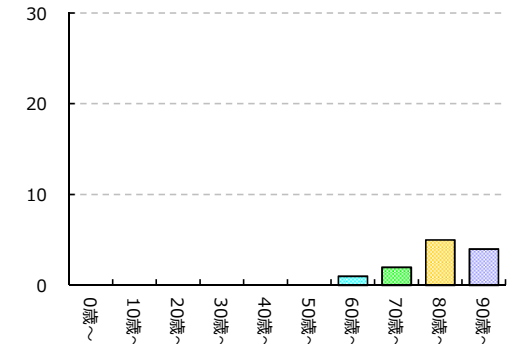
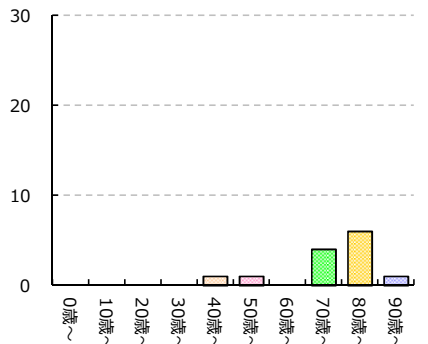
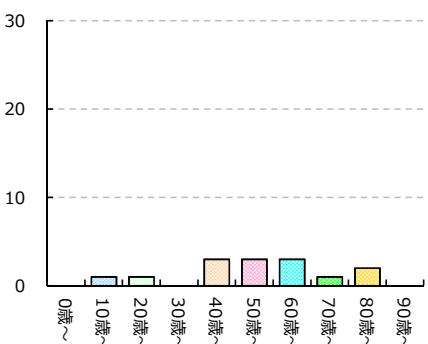
胃



甲状腺

肝及び肝内胆管

気管支及び肺



性

