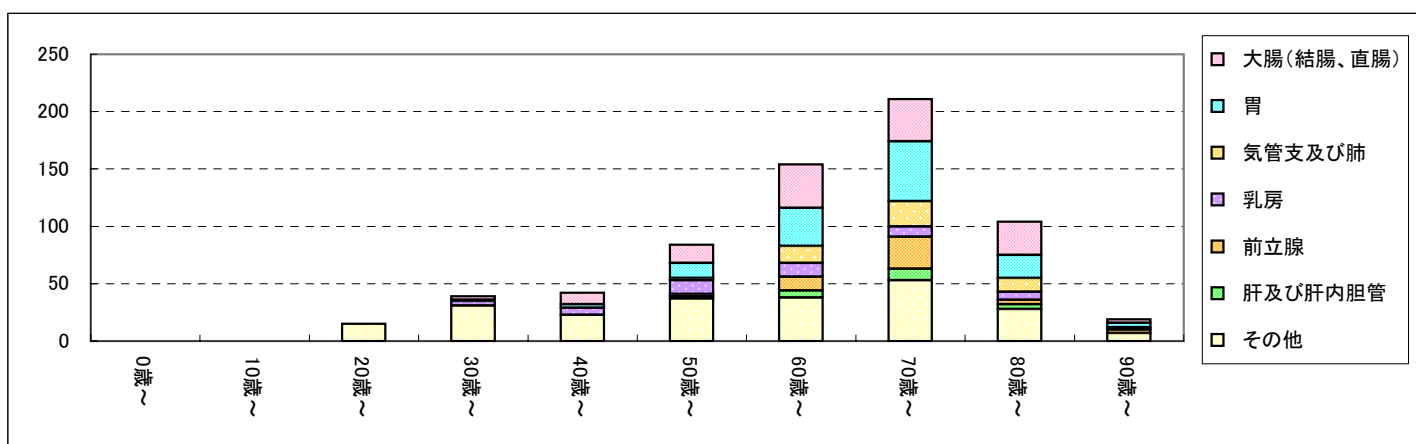


2009年診断例 年齢区分別

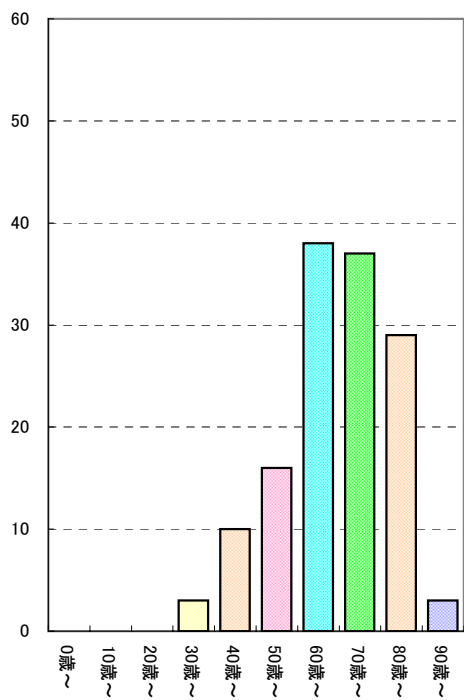
3. 部位別・年齢階層別登録件数(合計値2桁)

全体

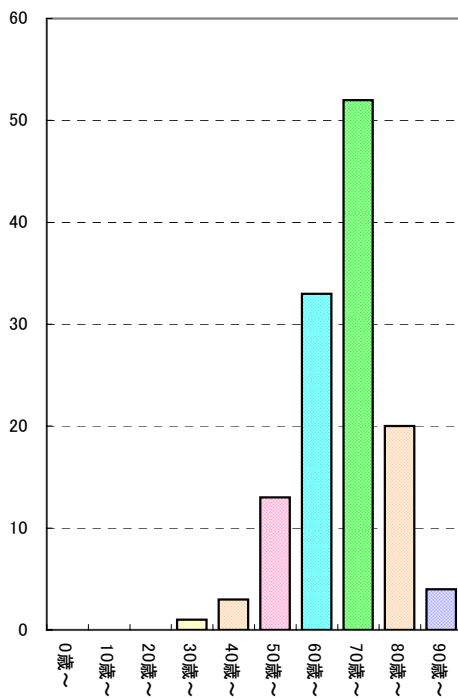
ICDO3	局在名称	合計	0～9歳	10～19歳	20～29歳	30～39歳	40～49歳	50～59歳	60～69歳	70～79歳	80～89歳	90歳～
C18-20	大腸(結腸、直腸)	136	0	0	0	3	10	16	38	37	29	3
C16	胃	126	0	0	0	1	3	13	33	52	20	4
C34	気管支及び肺	53	0	0	0	0	0	2	15	22	12	2
C50	乳房	50	0	0	0	4	6	12	12	9	7	0
C61	前立腺	49	0	0	0	0	0	2	12	28	4	3
C53	子宮頸部	45	0	0	11	23	6	4	1	0	0	0
C22	肝及び肝内胆管	22	0	0	0	0	0	2	6	10	4	0
C67	膀胱	18	0	0	0	1	0	2	6	5	3	1
C15	食道	17	0	0	0	0	0	4	4	8	1	0
C73	甲状腺	17	0	0	0	0	5	7	2	3	0	0
C70	髄膜	15	0	0	0	2	1	4	2	4	1	1
C25	膵	12	0	0	0	0	1	0	2	7	2	0
C54	子宮体部	11	0	0	0	2	1	2	3	2	1	0
C56	卵巣	11	0	0	1	0	1	3	3	3	0	0
C44	皮膚	10	0	0	0	0	0	2	1	2	4	1



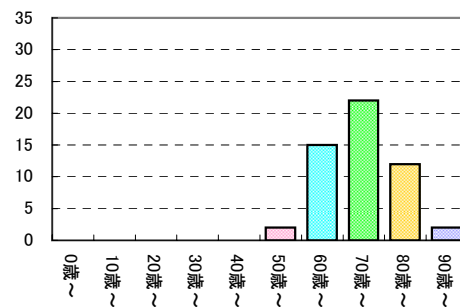
大腸(結腸、直腸)



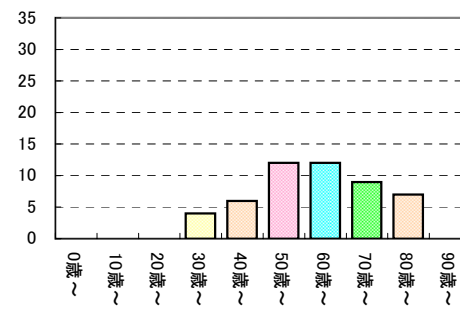
胃



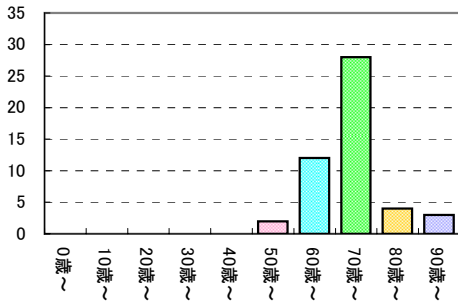
気管支及び肺



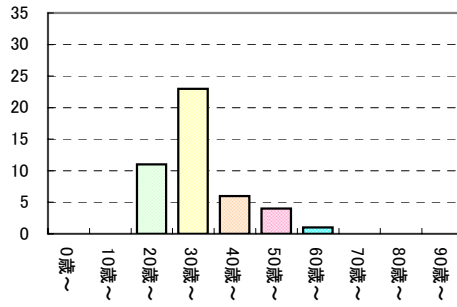
乳房



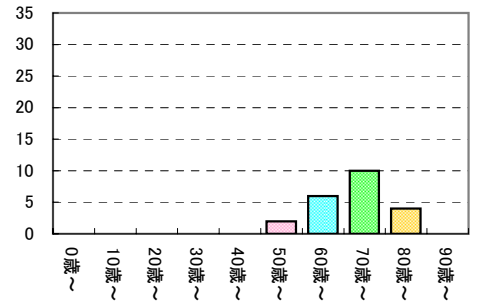
前立腺



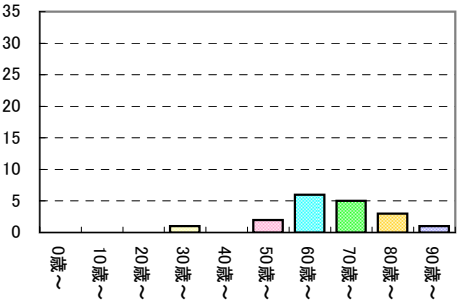
子宮頸部



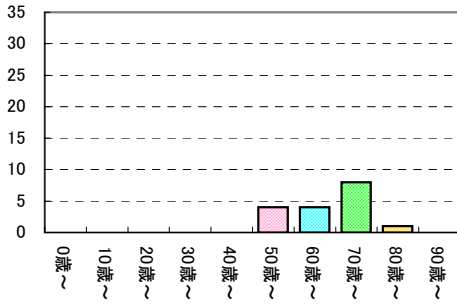
肝及び肝内胆管



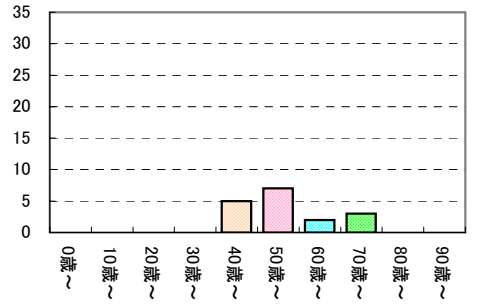
膀胱



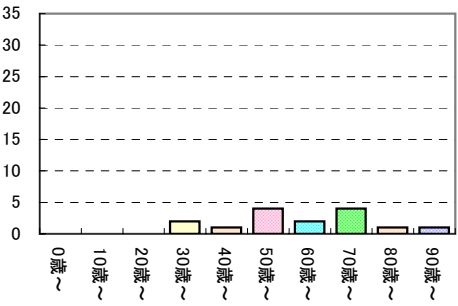
食道



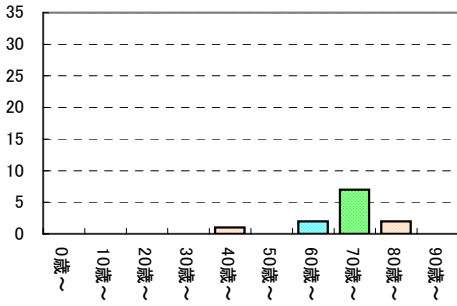
甲状腺



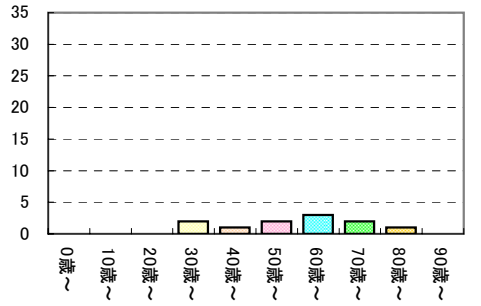
膵臓



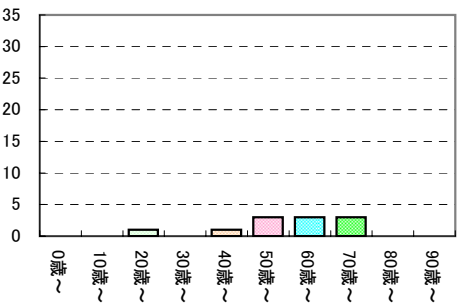
肺



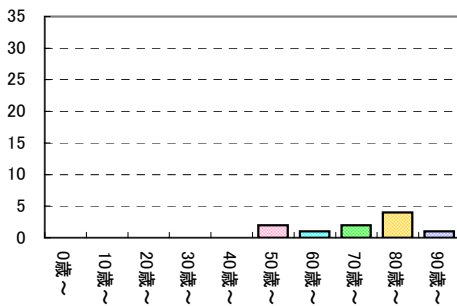
子宮体部



乳癌

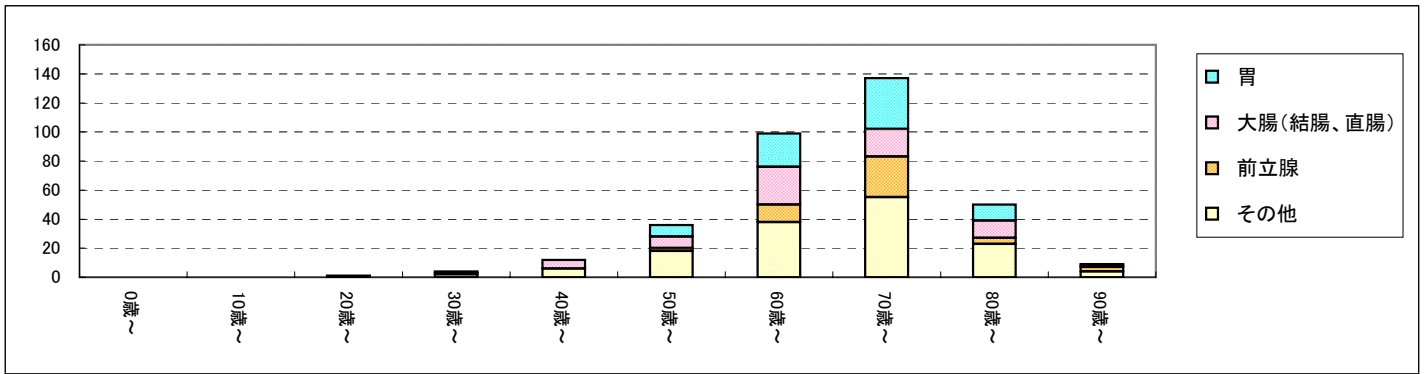


皮膚

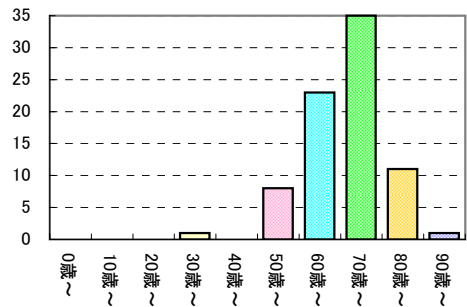


男性

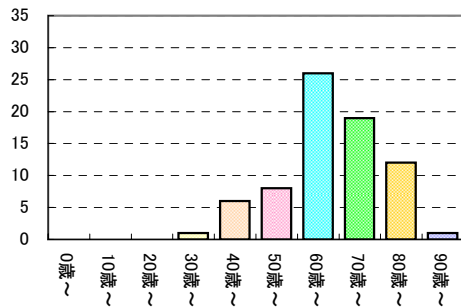
ICD03	局在名称	合計	0～9歳	10～19歳	20～29歳	30～39歳	40～49歳	50～59歳	60～69歳	70～79歳	80～89歳	90歳～
C16	胃	79	0	0	0	1	0	8	23	35	11	1
C18-20	大腸(結腸、直腸)	73	0	0	0	1	6	8	26	19	12	1
C61	前立腺	49	0	0	0	0	0	2	12	28	4	3
C34	気管支及び肺	41	0	0	0	0	0	1	13	16	9	2
C15	食道	17	0	0	0	0	0	4	4	8	1	0
C22	肝及び肝内胆管	14	0	0	0	0	0	2	3	7	2	0
C67	膀胱	11	0	0	0	1	0	2	4	2	1	1



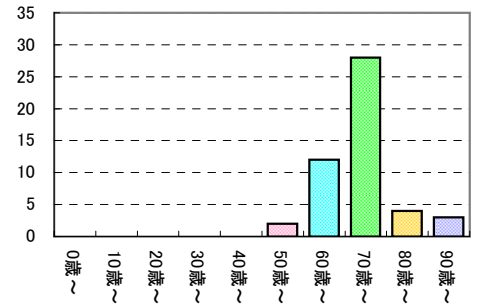
胃



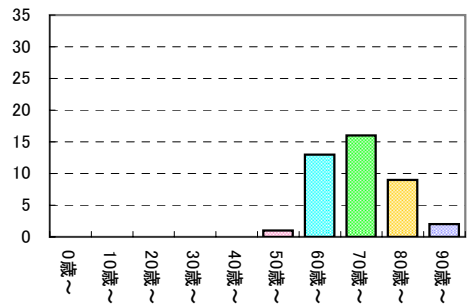
大腸(結腸、直腸)



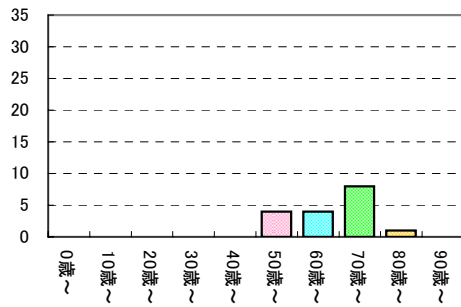
前立腺



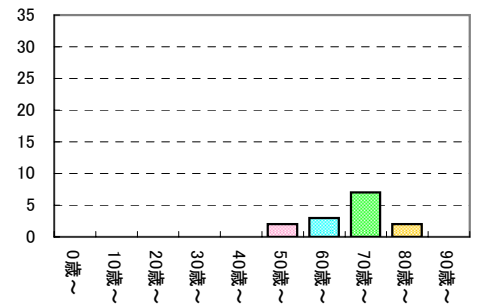
気管支及び肺



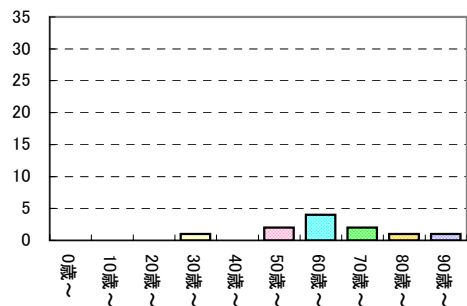
食道



肝及び肝内胆管

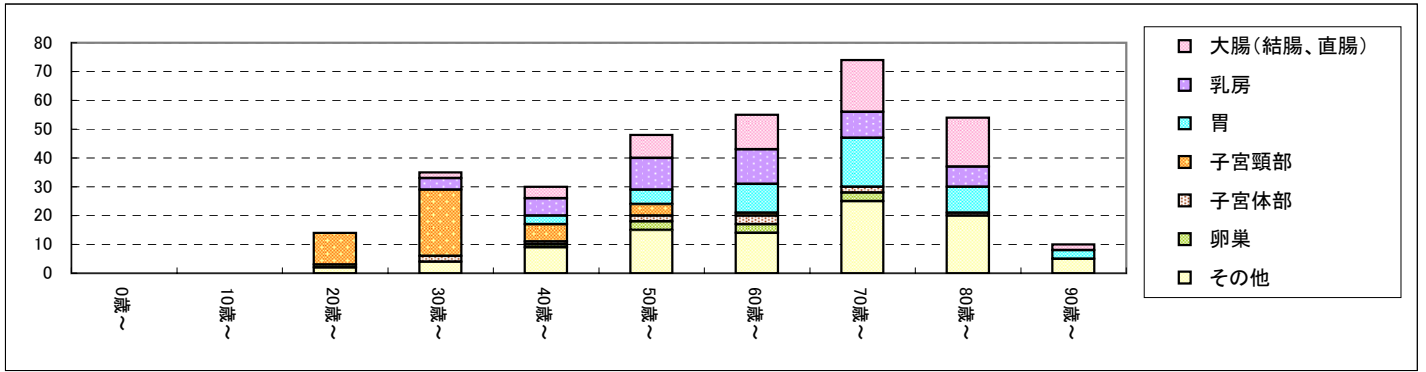


膀胱

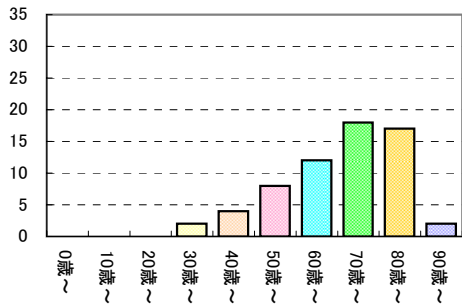


女性

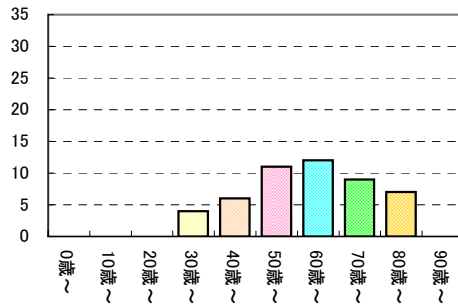
ICDO3	局在名称	合計	0～9歳	10～19歳	20～29歳	30～39歳	40～49歳	50～59歳	60～69歳	70～79歳	80～89歳	90歳～
C18-20	大腸(結腸、直腸)	63	0	0	0	2	4	8	12	18	17	2
C50	乳房	49	0	0	0	4	6	11	12	9	7	0
C16	胃	47	0	0	0	0	3	5	10	17	9	3
C53	子宮頸部	45	0	0	11	23	6	4	1	0	0	0
C73	甲状腺	14	0	0	0	0	5	6	1	2	0	0
C34	気管支及び肺	12	0	0	0	0	0	1	2	6	3	0
C54	子宮体部	11	0	0	0	2	1	2	3	2	1	0
C56	卵巣	11	0	0	1	0	1	3	3	3	0	0



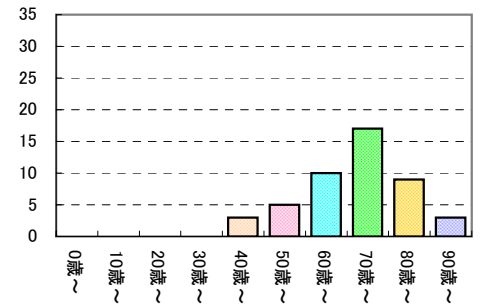
大腸(結腸、直腸)



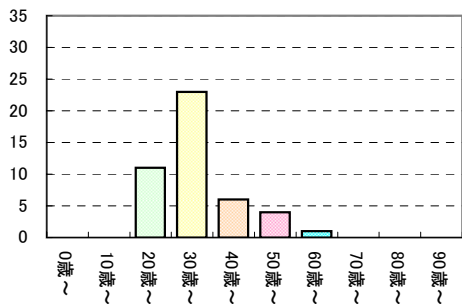
乳房



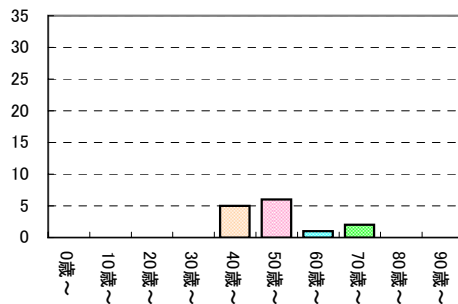
胃



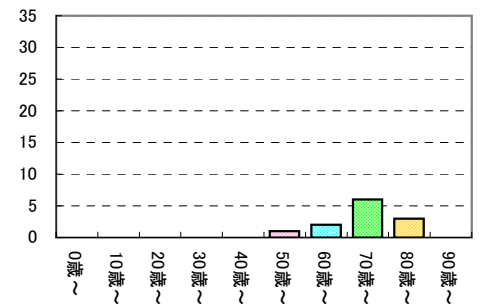
子宮頸部



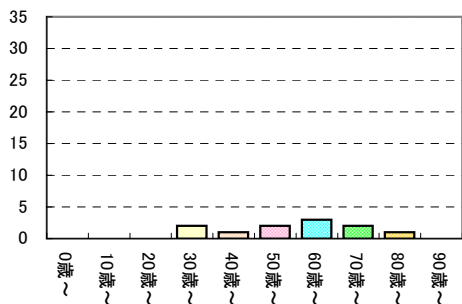
甲状腺



気管支及び肺



子宮体部



卵巣

