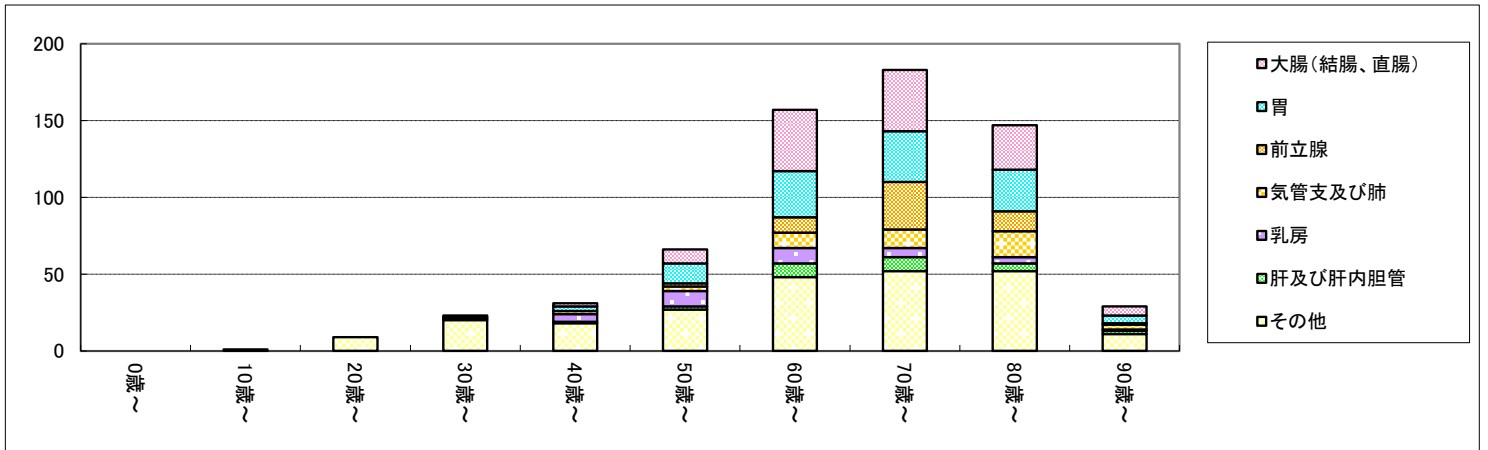


2008年診断例

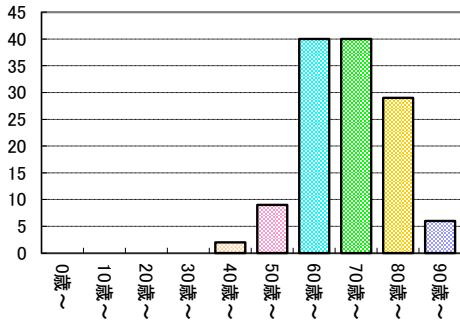
3. 部位別・年齢階層別登録件数(合計値2桁)

全体

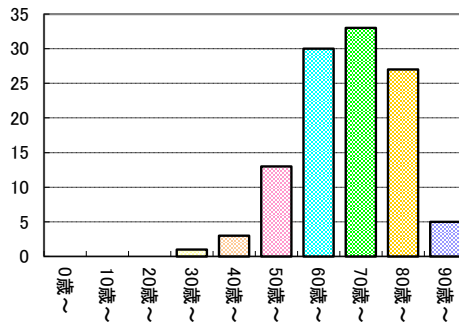
ICDO3	局在名称	合計	0～9歳	10～19歳	20～29歳	30～39歳	40～49歳	50～59歳	60～69歳	70～79歳	80～89歳	90歳～
C18-20	大腸(結腸、直腸)	126	0	0	0	0	2	9	40	40	29	6
C16	胃	112	0	0	0	1	3	13	30	33	27	5
C61	前立腺	57	0	0	0	0	0	2	10	31	13	1
C34	気管支及び肺	47	0	0	0	0	2	3	10	12	17	3
C50	乳房	37	0	0	0	1	5	10	10	6	4	1
C53	子宮頸部	31	0	0	6	11	11	2	0	1	0	0
C22	肝及び肝内胆管	29	0	0	0	1	1	2	9	9	5	2
C15	食道	25	0	0	0	0	0	3	12	3	6	1
C25	膵	25	0	0	0	0	0	4	5	6	9	1
C44	皮膚	16	0	0	0	0	0	0	0	7	6	3
C67	膀胱	16	0	0	0	0	0	1	1	6	8	0
C73	甲状腺	16	0	0	0	4	1	4	6	1	0	0
C54	子宮体部	13	0	0	0	2	2	3	4	2	0	0



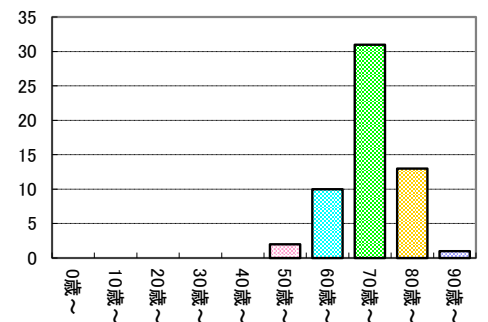
大腸(結腸、直腸)



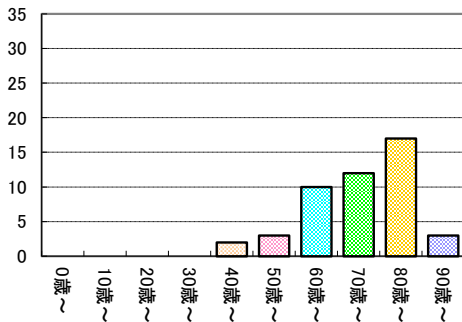
胃



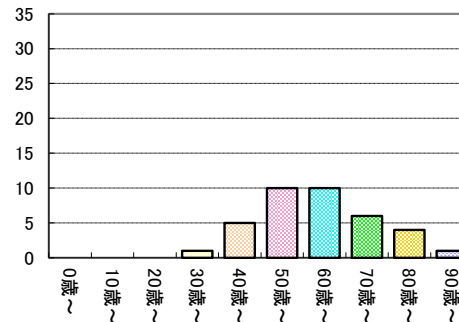
前立腺



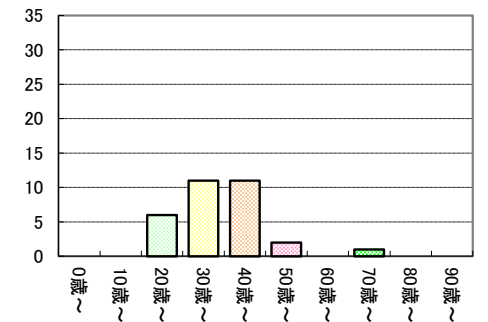
気管支及び肺



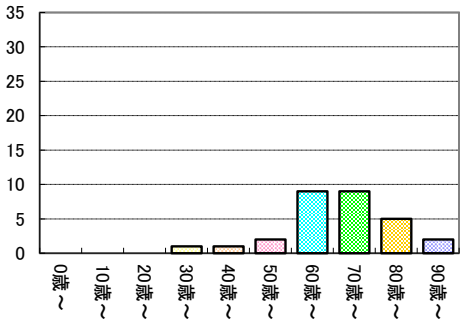
乳房



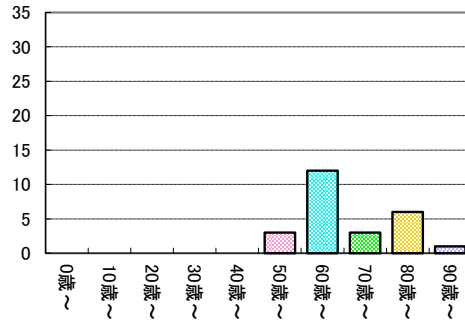
子宮頸部



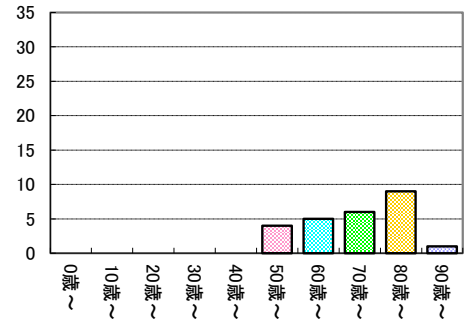
肝及び肝内胆管



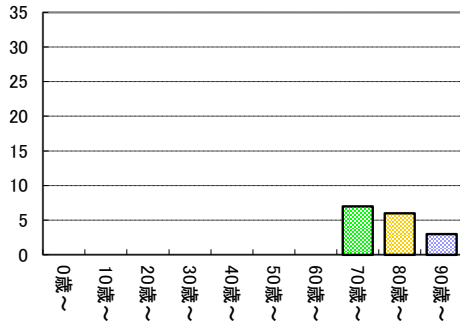
食道



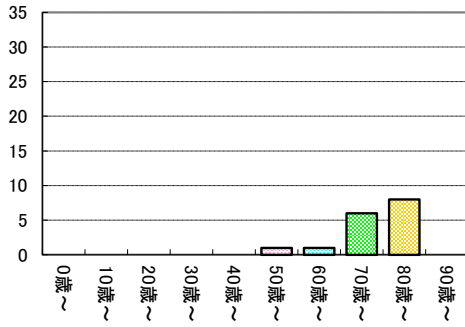
肺



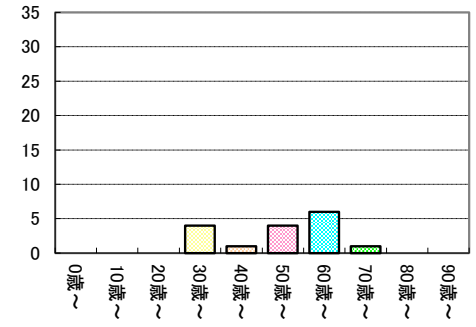
皮膚



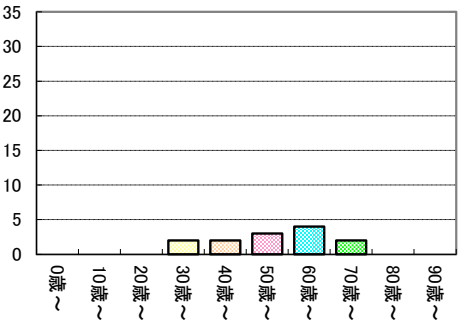
膀胱



甲状腺

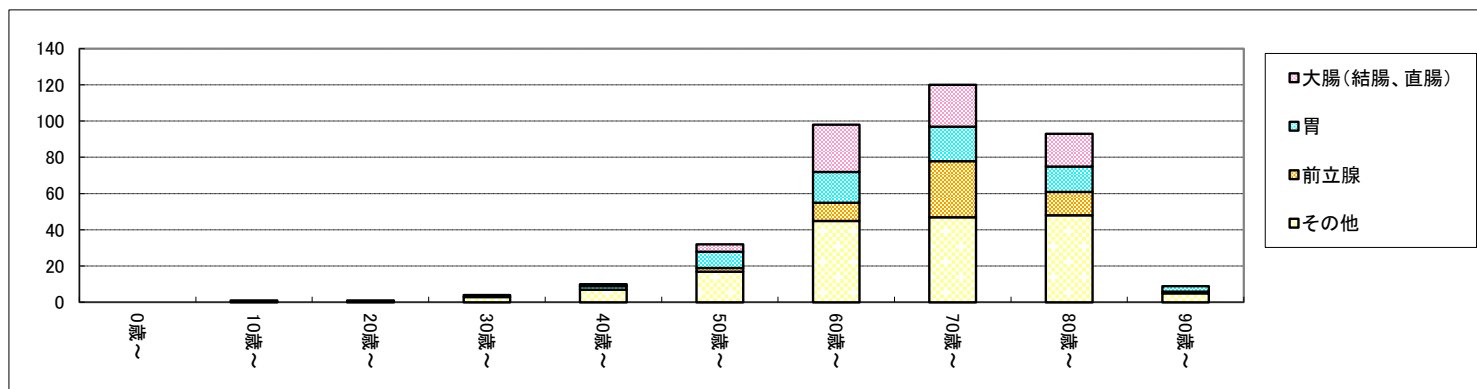


子宮体部

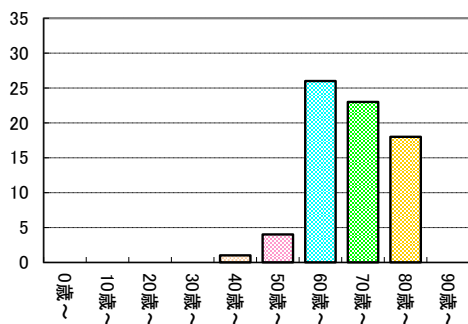


男性

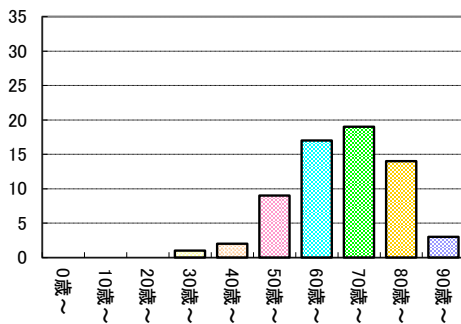
ICDO3	局在名称	合計	0～9歳	10～19歳	20～29歳	30～39歳	40～49歳	50～59歳	60～69歳	70～79歳	80～89歳	90歳～
C18-20	大腸(結腸、直腸)	72	0	0	0	0	1	4	26	23	18	0
C16	胃	65	0	0	0	1	2	9	17	19	14	3
C61	前立腺	57	0	0	0	0	0	2	10	31	13	1
C34	気管支及び肺	30	0	0	0	0	2	1	6	8	12	1
C15	食道	21	0	0	0	0	0	3	10	3	5	0
C22	肝及び肝内胆管	19	0	0	0	0	1	2	8	4	4	0
C25	膵	15	0	0	0	0	0	3	2	5	5	0
C67	膀胱	12	0	0	0	0	0	1	1	4	6	0



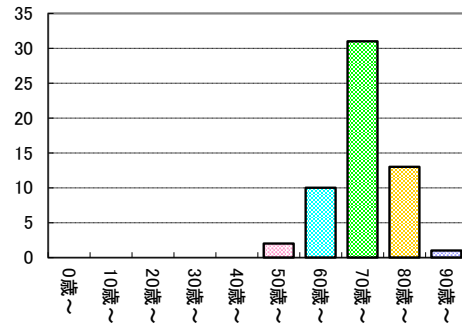
大腸(結腸、直腸)



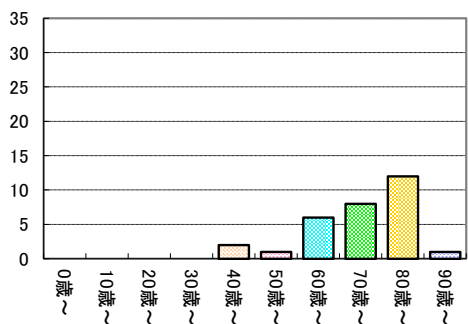
胃



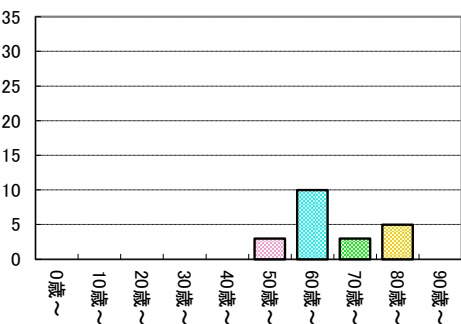
前立腺



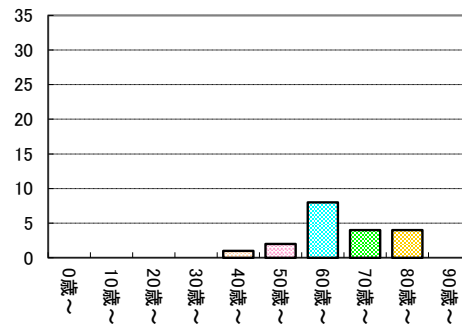
気管支及び肺



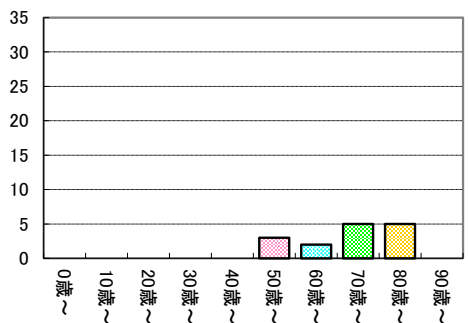
食道



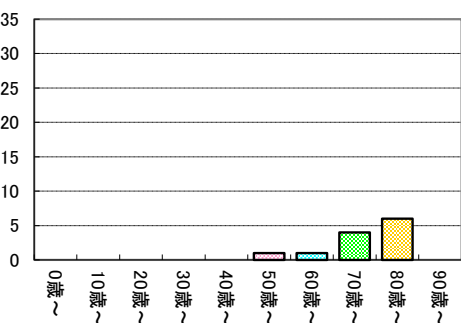
肝及び肝内胆管



膵

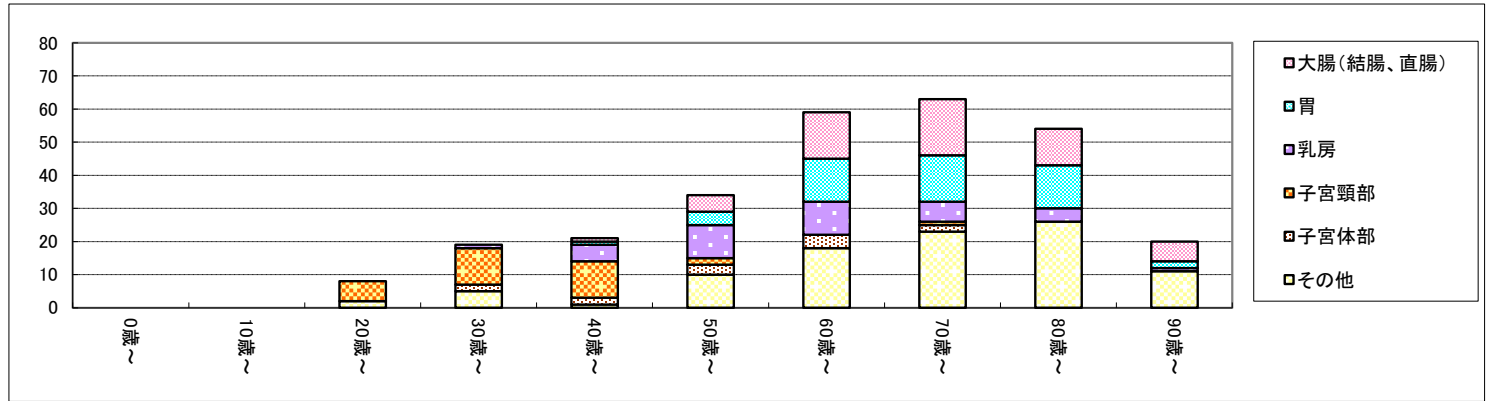


膀胱

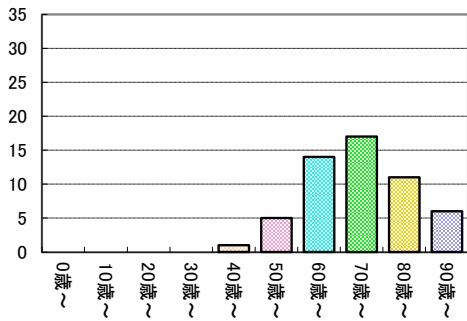


女性

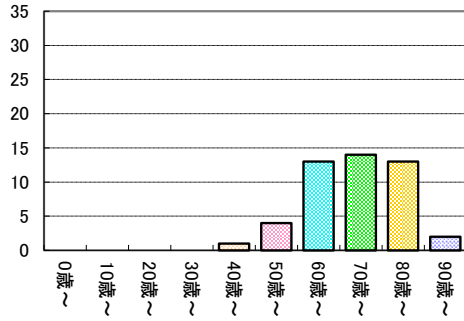
ICDO3	局在名称	合計	0～9歳	10～19歳	20～29歳	30～39歳	40～49歳	50～59歳	60～69歳	70～79歳	80～89歳	90歳～
C18-20	大腸(結腸、直腸)	54	0	0	0	0	1	5	14	17	11	6
C16	胃	47	0	0	0	0	1	4	13	14	13	2
C50	乳房	37	0	0	0	1	5	10	10	6	4	1
C53	子宮頸部	31	0	0	6	11	11	2	0	1	0	0
C34	気管支及び肺	17	0	0	0	0	0	2	4	4	5	2
C54	子宮体部	13	0	0	0	2	2	3	4	2	0	0
C22	肝及び肝内胆管	10	0	0	0	1	0	0	1	5	1	2
C25	膵	10	0	0	0	0	0	1	3	1	4	1



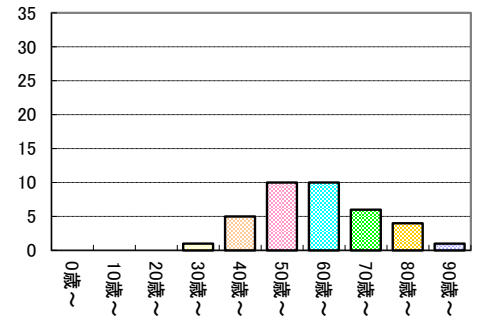
大腸(結腸、直腸)



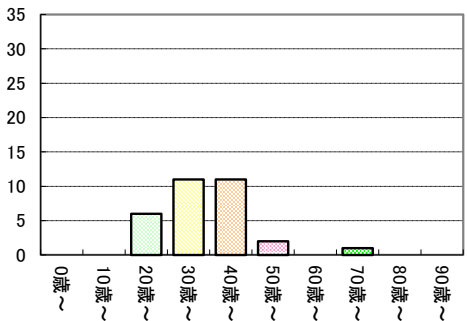
胃



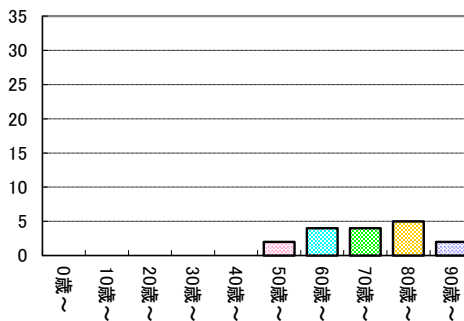
乳房



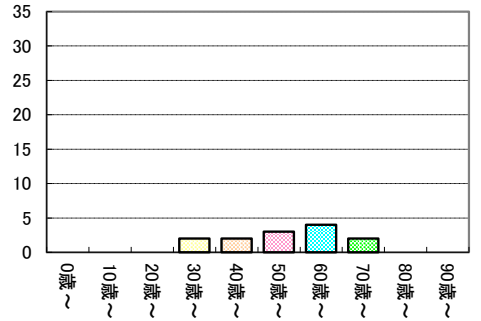
子宮頸部



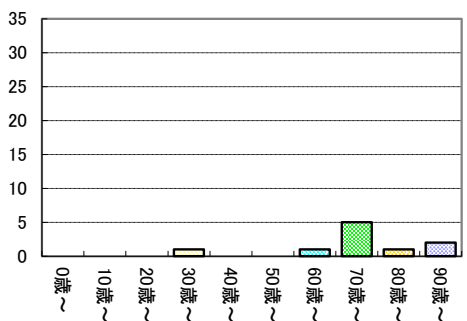
気管支及び肺



子宮体部



肝及び肝内胆管



膵

